

■注：本图册的版式、图像及文字未经允许不得影印、模仿。  
产品规格及产品供应状况如有变动，恕不另行通知。图册中的图文所示规格配备部分选择。

■Note: The plate, image and text of this album shall not be copied or imitated without permission.  
specifications and supply status are subject to change without prior notice. The specifications shown in the manual is equipped with part selection.



佛山市磐筑建材科技有限公司  
FOSHAN PANZHU BUILDING MATERIALS TECHNOLOGY CO., LTD

■ 地址：佛山市南海区狮山镇官窑红沙开发区富民三路三排一号  
■ 网址：www.punchuk.com

■ ADD: Row 3, Fumin 3rd Road, Hongsha Development Zone,  
■ Guanyao, Shishan Town, Nanhai District, Foshan City  
■ WEB: www.punchuk.com



专业铝单板  
金属天花系统  
供应商

# ALUMINUM VENEER

专业铝单板、金属天花系统供应商

佛山市磐筑建材科技有限公司  
FOSHAN PANZHU BUILDING MATERIALS TECHNOLOGY CO., LTD

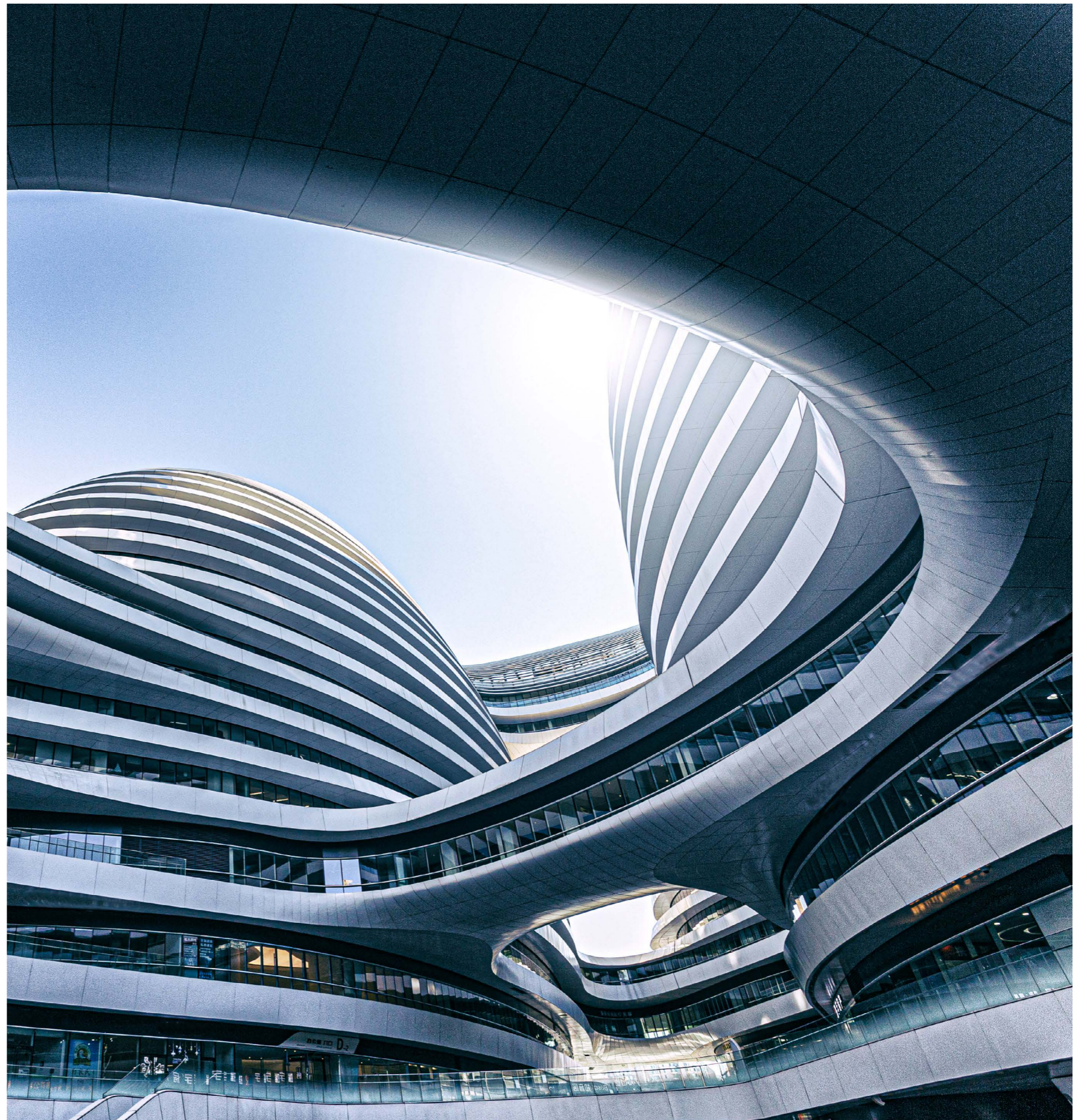
# ALUMINUM PLATE MANUFACTURERS

专业铝板生产厂家

自主设计 / 生产 / 施工 / 销售一体化模式

In-house design / production / construction  
/ sales all-in-one model

---



# CONTENTS

## 目录

### 企业篇 / COMPANY INTRODUCTION

目录 Contents	P01 - 02
企业简介 Company Introduction	P03 - 04
企业实力 Company Capacity	P05 - 06
企业荣誉 Honors & Certs	P07 - 08
企业文化 Culture	P09 - 10

### 产品篇 / PRODUCTS

铝单板 Aluminum veneer	P11 - 20
艺术雕花冲孔铝单板 Artistic carving punch	P21 - 22
弧形双曲铝单板 Arcuate hyperbolic	P23 - 24
氟碳铝单板 Aluminum fluorocarbon veneer	P25 - 26
拉丝铝单板 Brushed aluminum veneer	P27 - 28
覆膜铝单板 Coated aluminum veneer	P29 - 30
仿大理石铝单板 Imitation marble aluminum veneer	P31 - 32
仿木纹铝单板 Imitation marble aluminum veneer	P33 - 34
浮雕铝单板 Embossed aluminum veneer	P35 - 36
陶瓷铝单板 Ceramic aluminum veneer	P37 - 38
辊涂铝单板 Roll coated veneer	P39 - 40
喷绘铝单板 Spray painted aluminum veneer	P41 - 42

### 产品篇 / PRODUCTS

铝天花系列 Aluminum ceiling series	P43 - 46
异形天花 Heteromorphic smallpox	P47 - 48
拉网铝天花 Latticed aluminum ceiling	P49 - 50
型材方通 Profile square	P51 - 52
铝窗花 Aluminum window decoration	P53 - 54
铝方通 Aluminum fangtong	P55 - 56
铝蜂窝板 Aluminum honeycomb panels	P57 - 58
阳极氧化铝蜂窝板 Anodized aluminum panel	P59 - 60
铝瓦楞板 Aluminum corrugated plate	P61 - 62
铝方管花格 Aluminum square tube lattice	P63 - 64

### 工程篇 / PROJECTS

工程案例展示 Project gallery	P65 - 86
------------------------	----------

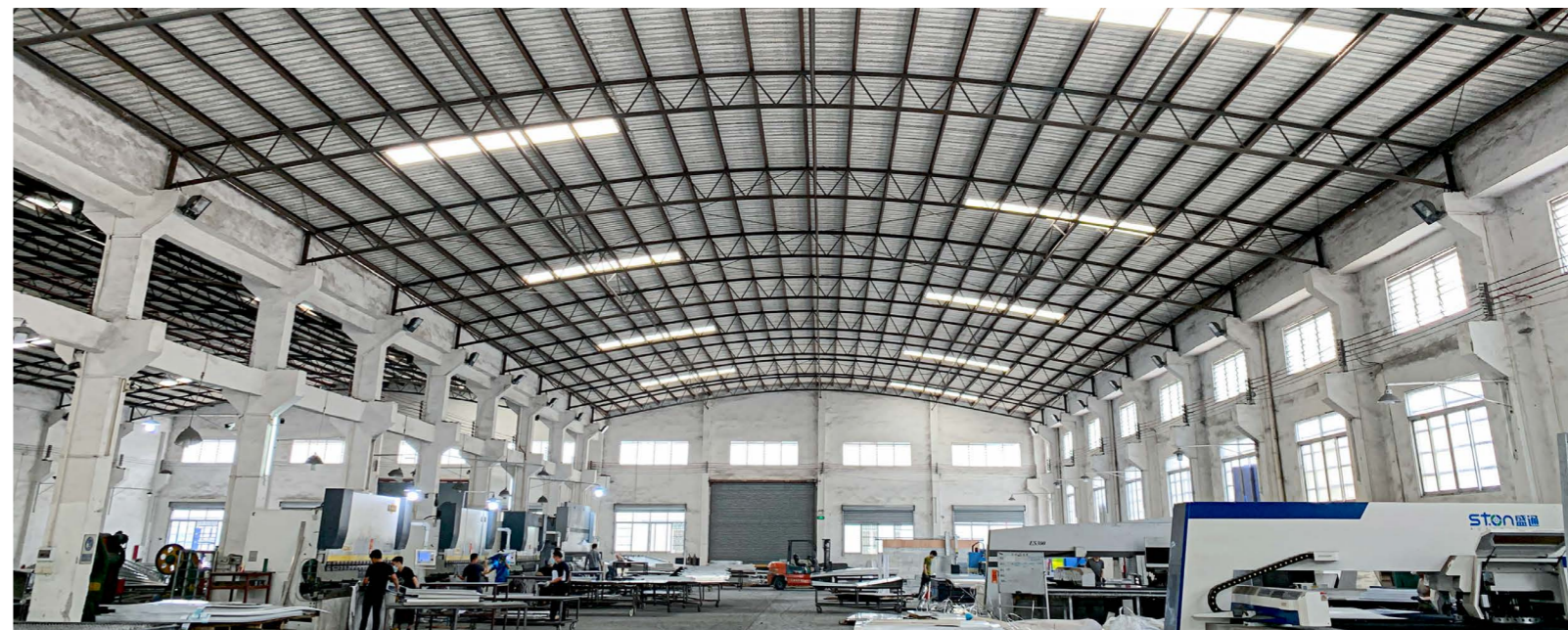
# COMPANY INTRODUCTION

## 公司简介

### 关于磐筑 / ABOUT PANZHU

佛山市磐筑建材科技有限公司是一家专业生产幕墙铝单板、金属铝制天花、冲孔铝单板、雕花铝单板、木纹铝单板、石纹铝单板、铝蜂窝板、拉网铝单板、双曲铝单板及铝型材加工喷涂的现代化企业，集设计、生产、销售、安装于一体，满足终端客户不同的设计和技术要求。

Foshan Panzhu Building Materials Technology Co., Ltd. is a professional production of curtain wall aluminum veneer, metal aluminum ceiling, punched aluminum veneer, carved aluminum veneer, wood grain aluminum veneer, stone grain aluminum veneer, aluminum honeycomb board, drag mesh aluminum veneer, hyperbolic aluminum veneer and aluminum profile processing and spraying of modern enterprises, set design, production, sales, installation in one, to meet the different design and technical requirements of end customers.



**2015**

企业成立于 2015 年

**10000 M<sup>2</sup>**

厂房面积超 1 万平

**10 YEARS+**

10 多年的专注经验

本企业成立于 2015 年，座落在有“建材之都”之称的佛山市。

厂房面积超 1 万平方米，拥有先进的数控钣金加工设备，配备全自动静电氟碳喷涂线、数控冲床、数控剪板机、数控折弯机及全自动真空吸塑热转印机、数控热压机等多套先进的高精度加工设备。所有产品严格按照国际标准进行质量监控，生产出全球性价比一流的产品。

企业严守质量管理方针，艰苦创业，锐意进取，在不断地探索和实践完善自我。追求卓越品质，打造世界品牌、一流的配套服务、现代化的管理意识，在国内外装饰行业中备受瞩目。

Founded in 2015, the company is located in Foshan City, known as the "Building Materials Capital".

Plant area of more than 10,000 square meters, with advanced CNC sheet metal processing equipment, equipped with automatic electrostatic fluorocarbon spraying line, CNC punching machine, CNC shearing machine, CNC bending machine and automatic vacuum blister thermal transfer machine, CNC hot press and other sets of advanced high-precision processing equipment. All products are strictly in accordance with international standards for quality control, producing the world's first-class cost-effective products.

Enterprises strictly abide by the quality management policy, hard work, forge ahead, in the continuous exploration and practice of self-improvement. The pursuit of excellent quality, to create a world brand, first-class supporting services, modern management awareness, in the domestic and foreign decoration industry has attracted much attention.

# THE PRODUCTION WORKSHOP

生产车间

## POWER 企业实力

### 一流的设备，专业的服务

FIRST CLASS EQUIPMENT AND PROFESSIONAL SERVICE

磐筑建材公司拥有 10 多年核心技术和管理团队专注积累，拥有 200 多人的专业生产、服务团队，拥有 650 吨 -3600 吨大型机台生产线，是广东新一代铝制装饰材料开创和推动者。

其中深加工车间拥有 CNC 加工中心、数控铣床、数控车床、钻床、数控锯床等设备，为在我司挤压原材料且需要后期加工的客户提供了非常便利的服务。

Panzhu building materials company has more than 10 years of core technology and management team focused on accumulation, has more than 200 professional production and service teams, and has 650 tons -3600 tons of large-scale machine production line. It is the pioneer and promoter of a new generation of aluminum decorative materials in Guangdong.

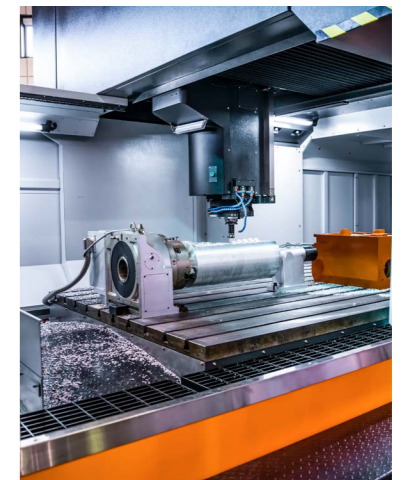
Among them, the deep processing workshop has CNC machining center, CNC milling machine, CNC lathe, drilling machine, CNC sawing machine and other equipment, which provides very convenient services for customers who extrude raw materials in our company and need post-processing.



激光切割 / Laser cutting



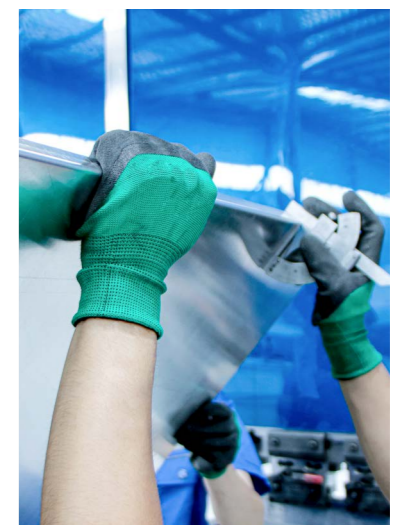
激光与压缩机 / Laser and compressor



数控铣床  
CNC milling machine



折弯成型  
Bending forming





# HONOR

## 企业荣誉

### ■ 以用户需求为导向，坚持高品质产品

GUIDED BY USER NEEDS, ADHERE TO HIGH-QUALITY PRODUCTS

#### 磐筑实行 ISO9001:

2015 国际质量管理体系，产品严格执行行业标准，确保进入市场的每一件产品都达到最优质量标准。

#### Panzhu implements ISO9001:

2015 international quality management system, and the products strictly implement industry standards to ensure that every product entering the market meets the best quality standards.



# CULTURE 企业文化

## ■ 宗旨 / Purpose

敬业、创新、务实、高效 Dedicated, innovative, pragmatic and efficient

## ■ 核心价值观 / Core values

精益求精，诚信为先，服务至上 Excellence, integrity first, service to the fullest

## ■ 愿景 / vision

追求卓越品质，打造世界品牌、一流的配套服务，现代化的管理意识，成为国内外装饰行业的领跑者

Pursue excellent quality, build a world brand, first-class supporting services, modern management consciousness, and become a leader in the decoration industry at home and abroad

## ■ 使命 / Mission

艰苦创业，锐意进取，用心做好细节，以诚赢得信赖

Hard work, forge ahead, do a good job in details, and win trust with sincerity

## ■ 企业文化是企业的灵魂是推动企业发展的不竭动力

Enterprise culture is the soul of an enterprise and the inexhaustible power to promote the development of an enterprise.



专业铝单板、金属天花系统供应商  
PROFESSIONAL ALUMINUM SHEET, METAL CEILING SYSTEM SUPPLIER

PURPOSE, CORE VALUES, VISION AND MISSION

# PRODUCTS

## 产品篇

专业生产幕墙铝单板、金属铝制天花系统供应商  
Specializing in the production of curtain wall aluminum veneer, metal aluminum ceiling system suppliers



# ALUMINUM VENEER

磐筑建材·铝单板系列

专业铝单板、金属天花系统供应商  
PROFESSIONAL ALUMINUM SHEET, METAL CEILING SYSTEM SUPPLIER

# ALUMINUM VENEER

## 铝单板

### ■ 铝单板的产品介绍

#### PRODUCT INTRODUCTION OF ALUMINUM VENEER

铝单板是采用优质铝合金板作为基板，然后通过数控弯曲等技术成型，装饰涂层表面喷涂新型幕墙材料。

目前，铝单板已经成为与玻璃、石材齐名的“三大幕墙材料”之一。广泛应用在建筑物表皮、吊顶。铝单板优越的加工性能与无与伦比的耐候性能，是其他建筑材料不可替代的，因此深受国内外建筑设计者的追捧和成为广大业主的明智选择。

Aluminum veneer is made of high quality aluminum alloy plate as the base plate, and then formed by numerical control bending technology, decorative coating surface spraying new curtain wall material.

At present, aluminum veneer has become one of the "three curtain wall materials" as well as glass and stone. Widely used in building skin, ceiling. Aluminum veneer superior processing performance and unparalleled weather resistance, is other building materials can not be replaced, so by the domestic and foreign architectural designers sought after and become the majority of owners of the wise choice.

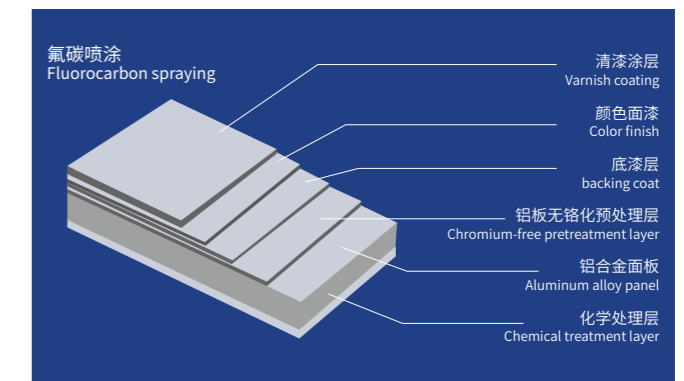


### ■ 铝单板的材质及构造

#### ALUMINUM VENEER MATERIAL AND STRUCTURE

铝单板采用优质高强铝合金板材，其常用厚度为 1.5mm、2.0mm、2.5mm、3.0mm、4.0mm，板材最大宽度在 2200mm 以内，最大长度在 6000mm 以内，常用铝合金牌号为 3003 或 1100，状态为 H24 或 H14。其构造主要由铝合金面板、铝制加强筋、铝制拉钉和铝制角码组成，整体结构由全铝打造。

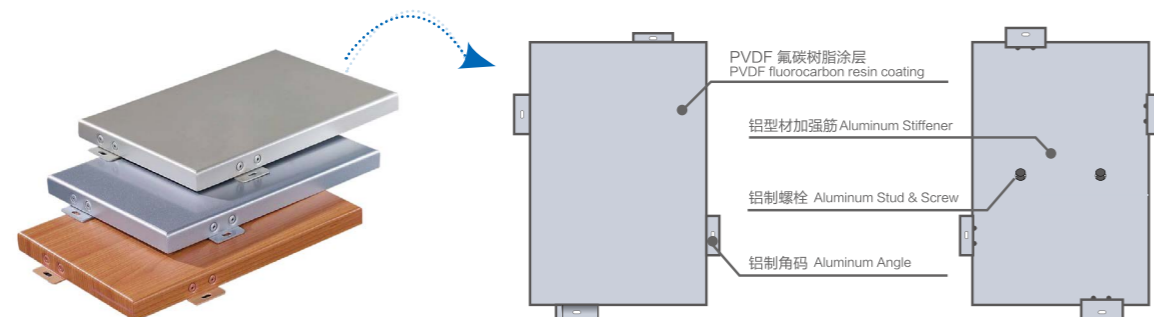
The aluminum veneer is made of high quality and high strength aluminum alloy plate, whose common thickness is 1.5mm, 2.0mm, 2.5mm, 3.0mm and 4.0mm, the maximum width of the plate is within 2200mm and the maximum length is within 6000mm. The commonly used aluminum alloy brand is 3003 or 1100, and the state is H24 or H14. Its structure is mainly composed of aluminum alloy panel, aluminum reinforcement, aluminum pull nails and aluminum corner code, the overall structure is made of all aluminum.



### ■ 铝单板的表面处理 / SURFACE TREATMENT OF ALUMINUM VENEER

铝单板表面一般经过铬化等前期处理后，再采用氟碳喷涂及其他喷涂加工工艺处理。其中氟碳涂层具有卓越的耐腐蚀性和耐候性，能抗酸雨、盐雾和各种空气污染物，耐冷热性能佳，能抵御强烈紫外线的照射，能长期保持不褪色、不粉化，使用寿命长。我厂选用世界知名的氟碳涂料生产商的优质氟碳涂料，颜色选择广泛，客户可直接按厂家提供的色板调色或提供国际标准化色卡色号。

The surface of the aluminum veneer is generally treated after chromification and other pre-treatment, and then the moon fluorocarbon spraying and other spraying processing processes are used. Among them, the fluorocarbon coating has excellent corrosion resistance and weather resistance, can resist acid rain, salt spray and various air pollutants, good resistance to cold and heat, can resist strong ultraviolet radiation, can maintain long-term non-fading, non-powdering, long service life. Our factory selects the world-renowned fluorocarbon coating manufacturers of high-quality fluorocarbon coatings, a wide range of color options, customers can directly according to the manufacturer's color plate or provide international standard color card color number.



## ■ 铝单板的优异性能 / THE EXCELLENT PERFORMANCE OF ALUMINUM VENEER

### ■ 重量轻、刚性好、强度高、安全可靠

LIGHT WEIGHT, GOOD RIGIDITY, HIGH STRENGTH, SAFETY AND RELIABILITY

3mm 铝单板每平方米重量是 8KG，是外墙干挂石材重量的三分之一，成倍减轻建筑承重，节约了资源和建筑主体成本。

The weight of 3mm aluminum veneer per square meter is 8kg, which is one third of the weight of dry hanging stone on the outer wall. It doubles the load-bearing of the building and saves resources and the main cost of the building.



### ■ 自洁力强，易保养

STRONG SELF-CLEANING POWER, EASY MAINTENANCE

氟碳涂膜、粉末涂层流平性好，非粘性使表面很难附着污染物，具有良好的自洁功能。

Fluorocarbon coating film and powder coating have good leveling and non-adhesive properties, making it difficult for pollutants to adhere to the surface, and has good self-cleaning function.



### ■ 色彩丰富，装饰效果好 / RICH COLOR, GOOD DECORATIVE EFFECT

成熟的氟碳喷涂和静电粉末喷涂技术使得涂料与铝板间附着均匀一致，颜色靓丽，相比石材幕墙，色差值极小。

Mature fluorocarbon spraying and electrostatic powder spraying technology makes the coating and aluminum plate adhesion uniform, beautiful color, compared with the stone curtain wall, the color difference value is very small.

### ■ 有利环保，可回收，保值率高

ENVIRONMENTALLY FRIENDLY, RECYCLABLE, HIGH RETENTION RATE

铝单板可 100% 回收，不同于玻璃、石材、陶瓷、铝塑板等装饰材料，而且回收价值高。

Aluminum veneer can be 100% recycled, which is different from decorative materials such as glass, stone, ceramics, aluminum plastic plate, and has high recycling value.

### ■ A 级防火性能和超强耐候性能

CLASS A FIRE RESISTANCE AND SUPER WEATHER RESISTANCE

全铝结构的铝单板，拥有 A 级防火性能和超强耐候性能。铝单板表面采用的 KYNAR-500、hylur500 为基础的 PVDF 氟碳涂层可达 30 年不褪色。

The weight of 3mm aluminum veneer per square meter is 8kg, which is one third of the weight of dry hanging stone on the outer wall. It doubles the load-bearing of the building and saves resources and the main cost of the building.

### ■ 加工性能超群，造型出众

SUPERIOR PROCESSING PERFORMANCE, OUTSTANDING SHAPE

采用先钣金加工后表面喷涂处理工艺，铝板可加工成平面、弧面和球面等各种复杂的几何形状。

The aluminum plate can be processed into various complex geometric shapes such as plane, arc surface and spherical surface by adopting the process of sheet metal processing first and then surface spraying.



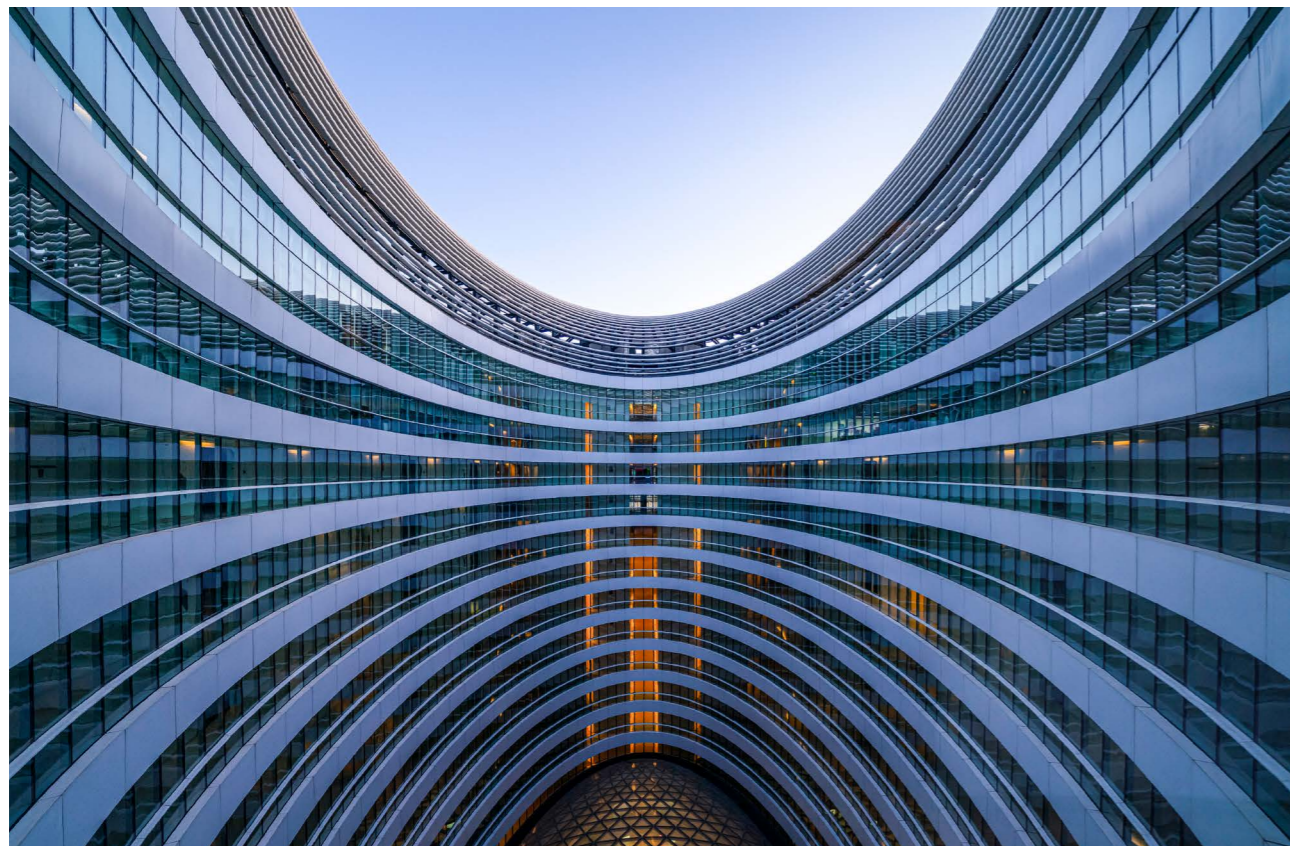
## ■ 铝单板的特点 / THE CHARACTERISTICS OF ALUMINUM VENEER

铝单板采用优质铝合金板材加工而成，铝单板加工工艺考究，可塑性强，可加工成平面、弧形面和球面等各种复杂的形状；铝单板表层采用氟碳喷涂、静电粉末喷涂、木纹热转印等表面处理方式，不受紫外线、温度、气温和大气腐蚀，更具有良好的抗弯曲度及优良的抗风压性能，并且能够发挥其重要特点，可二次回收利用增值。

可经过转塔数控冲床加工成各种美丽冲孔图案，把建筑物装饰成大城市的靓丽风景；色彩选择性广泛，装饰效果好；可以和玻璃墙、石材幕墙组合成不同的外观体，使建筑更具大气、现代、艺术和新颖的风格。

Aluminum veneer made of high quality aluminum alloy plate processing, aluminum veneer processing technology, plasticity, can be processed into plane, arc surface and spherical surface and other complex shapes; Aluminum veneer surface using fluorocarbon spraying, electrostatic powder spraying, wood grain heat transfer and other surface treatment, is not subject to ultraviolet, temperature, air temperature and atmospheric corrosion, more has good bending resistance and excellent wind pressure resistance, and can play its important characteristics, can be reused value-added.

Can be processed by the turret CNC punch into a variety of beautiful punching patterns, the buildings decorated into the beautiful scenery of the big city; Wide selection of color, good decorative effect; Can be combined with glass wall, stone curtain wall into different appearance body, make the building more atmospheric, modern, artistic and novel style.



## ■ 铝单板的应用范围 / THE APPLICATION SCOPE OF ALUMINUM VENEER



铝单板近年来，深受广大用户、设计师和工程用户的青睐和推荐，用途非常广泛。

常用于装饰建筑外墙、机场、高铁车站、地铁站、会展中心、体育场馆、会议中心、火车站、汽车站、办公楼、商场、钢结构外装、街道外立面整治、各种梁柱、吊顶、室内装饰等建筑物表皮装饰。

Aluminum veneer in recent years, by the majority of users, designers and engineering users favored and recommended, very wide use.

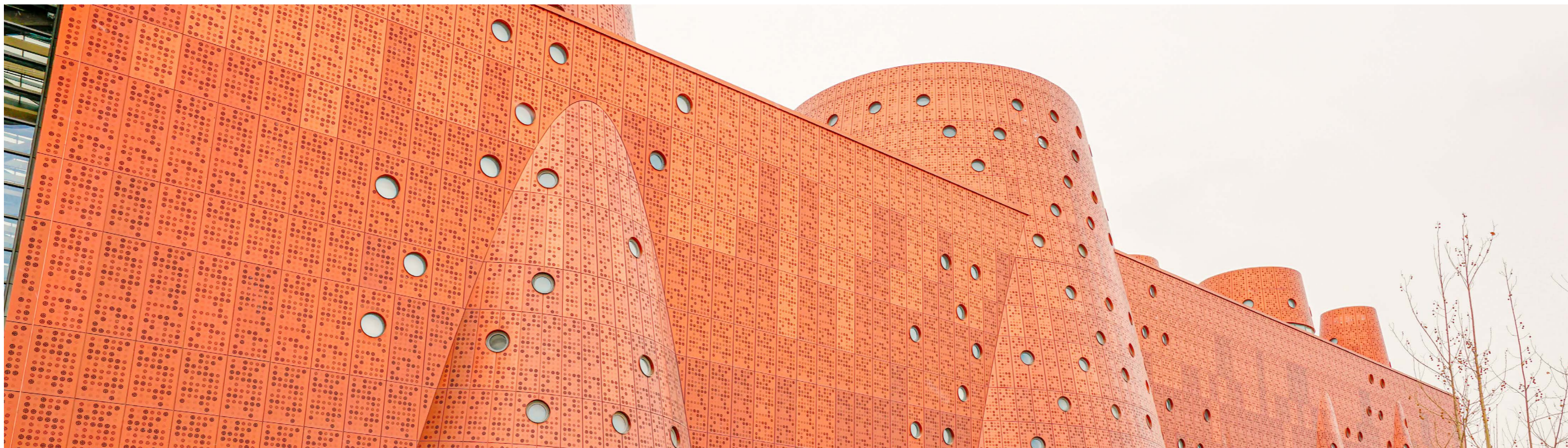
It is often used to decorate exterior walls of buildings, airports, high-speed railway stations, subway stations, exhibition centers, stadiums, convention centers, railway stations, bus stations, office buildings, shopping malls, steel structure exterior decoration, street facade renovation, various beams, ceilings, interior decoration and other building skin decoration.

# ART SCULPTURE AND PUNCHING

## 艺术雕花冲孔铝单板

### ■ 艺术雕花冲孔铝单板的优点

THE ADVANTAGES OF ARTISTIC ENGRAVING PUNCHING ALUMINUM VENEER



### ■ 艺术雕花冲孔铝单板的产品介绍

ARTISTIC ENGRAVING PUNCHING ALUMINUM VENEER PRODUCT INTRODUCTION

艺术雕花冲孔铝单板是金属铝单板产品的艺术延伸。通过在铝单板表面切割冲孔等工艺加工成具有各种各样的图案。艺术雕花冲孔铝单板可以把整个墙面分割成一块块再进行拼装，每块艺术雕花冲孔铝单板都是其中的个体，为室内空间增加了艺术元素。

Artistic engraving punching aluminum veneer is the artistic extension of metal aluminum veneer products. Through the aluminum veneer surface cutting punching and other processes to have a variety of patterns. Art carved aluminum veneer can divide the whole wall into pieces and then assemble, each art carved aluminum veneer is one of the individual, for the interior space to increase the artistic elements.



冲孔铝单板良好的材料，技术特性以及塑造表皮视觉整体感，降低建筑能耗的优势，使其能够在建筑的应用上有很大大前景，建筑设计师非常看好，并将进一步探索和创新其构造方式和表现效果。冲孔铝遮阳板龙骨系统可与铝单板相结合，共同组成外表皮系统。根据冲孔铝单板模块的尺寸，龙骨系统常以均质的网格划分建筑立面，强调立面尺度感。

Punching aluminum veneer good material, technical characteristics and shape the skin visual overall sense, reduce the advantages of building energy consumption, so that it can have a great prospect in the application of architecture, architectural designers are very optimistic, and will further explore and innovate its structure and performance effect. The punching aluminum visor keel system can be combined with aluminum veneer to form the outer skin system. According to the size of the punching aluminum veneer module, the keel system often divides the building facade in a homogeneous grid, emphasizing the sense of scale of the facade.

# CURVED HYPERBOLIC ALUMINUM VENEER

## 弧形双曲铝单板

### ■ 弧形双曲铝单板的产品介绍

ARC HYPERBOLIC ALUMINUM VENEER PRODUCT INTRODUCTION

随着建筑外形风格的多样化，双面铝单板已越来越受业主和幕墙设计师的青睐。弧形双曲铝单板不受设计的限制，可以实现复杂的外形构造。而且对加工工艺要求比较高，安装效果比所谓的“以直代曲”等弧线圆润，充分展示了弧形铝单板在金属幕墙上的艺术魅力，让建筑物呈现“灵动”之美。

With the diversification of architectural appearance style, double-sided aluminum veneer has become more and more popular with owners and curtain wall designers. Arc hyperbolic aluminum veneer is not limited by design and can realize complex shape structure. Moreover, the requirements for processing technology are relatively high, and the installation effect is more mellow than the so-called "straight instead of curved" and other arcs, which fully shows the artistic charm of arc-shaped aluminum veneers on metal curtain walls and makes buildings appear "smart" beauty.



### ■ 装饰效果好

GOOD DECORATIVE EFFECT

铝单板幕墙虽然是一种金属材料产品，但是其材质特点抗腐蚀外型美观，呈现出精致的外型，纹路清楚，图案丰富多彩，色调自然，在装饰的过程中，能够达到逼真的效果，简洁大方。

Although aluminum veneer curtain wall is a metal product, its material features are anti-corrosion and beautiful appearance. It presents a delicate appearance with clear lines, rich and colorful patterns and natural colors. In the process of decoration, it can achieve realistic effects and is simple and generous.

### ■ 环保安全

ENVIRONMENTAL SAFETY

铝单板幕墙在生产的过程中，严苛把控有害物质，充分利用自然的物质，保护生态环境，同时原材料的性能仍未改变，具有消化吸收噪音，隔热保温的现代装饰规定。能够在满足客户规定的状况下，达到环境保护的效果。

In the production process of aluminum veneer curtain wall, harmful substances are strictly controlled, natural substances are fully utilized, and the ecological environment is protected. Meanwhile, the performance of raw materials remains unchanged. It has modern decoration regulations of digesting and absorbing noise and heat insulation. It can achieve the effect of environmental protection under the condition of meeting the customer's requirements.

### ■ 色调丰富 选择多样

COLOR RICH CHOICE VARIETY

铝单板幕墙在制作的过程中，采用优秀的加工工艺，让涂层匀称有序的涂到表层，并通过不断尝试，让铝单板幕墙有呈现更多色调的可能，同时在经过太阳暴晒后，不会出现褪色的状况，坚固耐用，给消费者很大的选择空间。

During the production process of aluminum veneer curtain wall, excellent processing technology is adopted to make the coating evenly and orderly applied to the surface layer. Through continuous attempts, it is possible for aluminum veneer curtain wall to show more colors. At the same time, it will not fade after being exposed to the sun. It is strong and durable, giving consumers a lot of choice.



# FLUOROCARBON ALUMINUM VENEER

## 氟碳铝单板

### ■ 氟碳铝单板的产品介绍

PRODUCT INTRODUCTION OF FLUOROCARBON ALUMINUM VENEER

氟碳铝单板是单层面板的铝板经过加工，以优质铝合金板材为基材，再经过数控折弯等技术成型，最大可加工 6m 长，每隔一定间距需要加辅助加强筋，还有角码，结构主要以凹底面、凸表面，氟碳铝单板底面不需要任何处理，氟碳铝单板表面可采用喷涂、辊涂、复合等三种工艺配合加工生产的一种新型幕墙材料。

Fluorocarbon aluminum veneer is an aluminum plate of single-layer panel. After processing, it takes high-quality aluminum alloy plate as the substrate, and then is formed by numerical control bending and other technologies. It can be processed to a maximum length of 6m. It needs to add auxiliary reinforcing ribs at regular intervals, and corner codes. The structure is mainly concave bottom surface and convex surface. The bottom surface of fluorocarbon aluminum veneer does not need any treatment. The surface of fluorocarbon aluminum veneer can be sprayed, roller coated. It is a new curtain wall material produced by combining three processes, such as composite.



### ■ 氟碳喷涂色卡 / FLUOROCARBON SPRAYING COLOR CARD

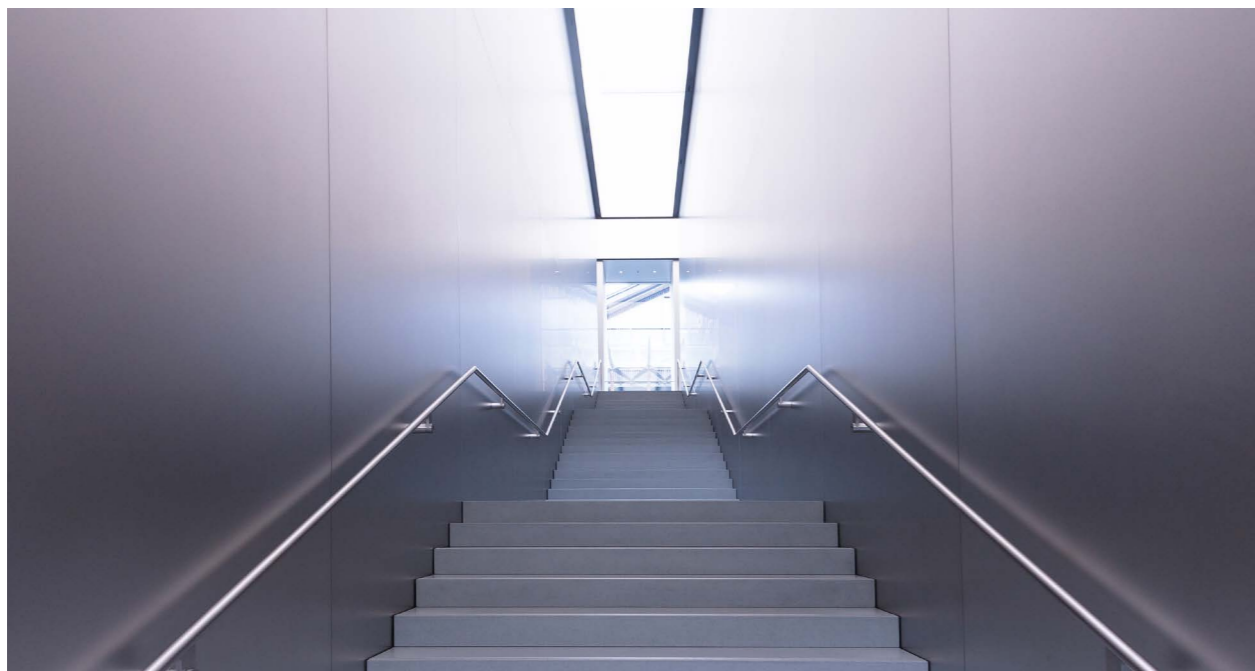
Color No:500# Color Name: 象牙白 Ivory White	Color No:1307# Color Name: 柠檬黄 Lemon yellow	Color No:171# Color Name: 桔红 Orange red	Color No:1005# Color Name: 红色 Red	Color No:1148# Color Name: 深蓝 Dark blue	Color No:125# Color Name: 草绿 Grass green	Color No:131# Color Name: 咖啡色 brown

### ■ 氟碳铝单板的优良性能

EXCELLENT PERFORMANCE OF FLUOROCARBON ALUMINUM VENEER

极佳的耐候性和抗紫外线性能，色彩非常持久稳定，可保持最少十年甚至二十年不变色。优良的耐酸、碱性能高，能经受恶劣环境的风吹日晒。附着性好、韧性高，耐冲击性强，涂层光洁，耐污染性强容易清洁。色彩范围广、鲜艳美观、质感好。有单色漆、金属漆可以最大限度满足客户要求。

Excellent weather resistance and ultraviolet resistance, the color is very durable and stable, and can be kept unchanged for at least ten or even twenty years. Excellent acid resistance, high alkaline energy, can withstand the wind and sun in harsh environments. Good adhesion, high toughness, strong impact resistance, smooth coating, strong pollution resistance and easy cleaning. Wide range of colors, bright and beautiful, and good texture. There are monochrome paint and metallic paint to meet customer requirements to the maximum.



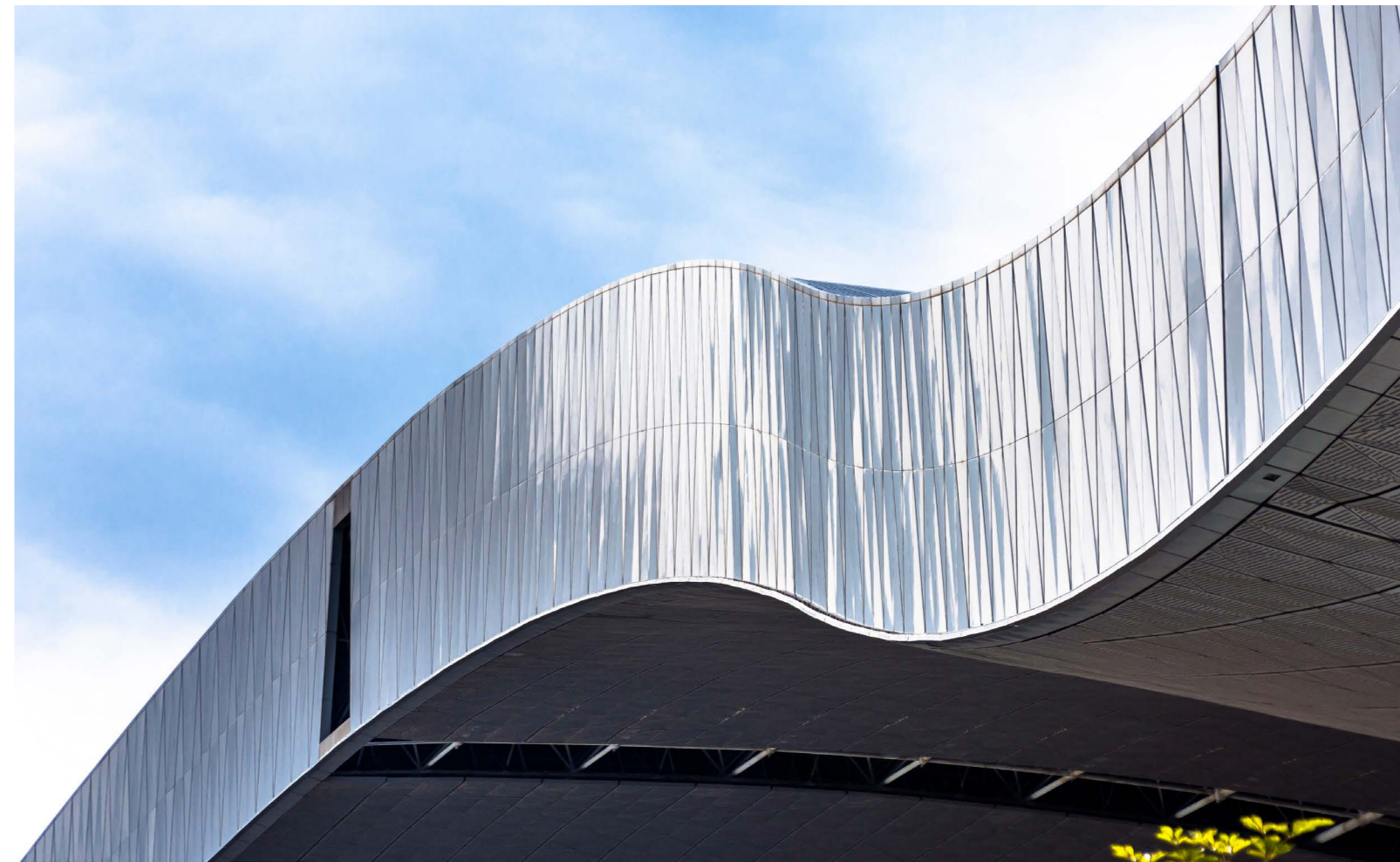
# BRUSHED ALUMINUM VENEER

## 拉丝铝单板

### ■ 拉丝铝单板的产品介绍 / PRODUCT INTRODUCTION OF DRAWING ALUMINUM VENEER

拉丝铝单板是一种反复用砂纸将铝单板刮出线条的制造过程，其工艺流程主要分为脱脂、沙磨机、水洗3个部分。在铝单板拉丝制作过程中，阳极处理之后的特殊的皮膜技术，可以使铝单板表面生成一种含有该金属成分的皮膜层，清晰显现每一根细微丝痕，从而使金属哑光中泛出细密的发丝光泽。越来越多的铝单板产品的金属外壳都使用了金属拉丝工艺，以起到美观，抗侵蚀的作用。使产品兼备时尚和科技的元素，这也是该工艺备受欢迎的原因之一。

Wire drawing aluminum veneer is a manufacturing process of repeatedly scraping aluminum veneer out of the line with sandpaper. The process flow is mainly divided into three parts: degreasing, sand grinding and water washing. In the drawing process of aluminum veneer, the special film technology after anodic treatment can make a film layer containing the metal component on the surface of aluminum veneer, clearly show every fine wire trace, and make the metal Matt with fine hair luster. More and more aluminum veneer products use metal wire drawing technology for their metal shells, so as to have a beautiful and corrosion-resistant effect. It makes the product have both fashion and technology elements, which is also one of the reasons why this process is popular.



### ■ 拉丝铝单板的特点

#### THE CHARACTERISTICS OF DRAWING ALUMINUM VENEER



拉丝铝单板，是通过拉丝或者电腐蚀等工艺生产出来的，价格相对普通板材较高。表面采用金属拉丝工艺的铝单板产品，可以明显减少手指油印，哑光效果好。拉丝铝单板既能作为建材装饰材料也常用于日常生活的家具，家电产品，电子产品等产品的金属盒包装使用。拉丝的铝单板表面处理工艺不仅能刷除铝单板表面的细小划痕，不同的纹理效果配合设计能起到各种装饰作用一些复古的建筑设计风格中，就可以使用这种特殊工艺的拉丝铝单板作为装饰材料，时尚的外观、哑光的金属质感，往往能带来强烈的视觉冲击，使得整个设计风格更华丽独特。

Wire drawing aluminum veneer is produced by wire drawing or electro-corrosion, and its price is higher than that of ordinary plate. Aluminum veneer products with metal drawing process on the surface can significantly reduce finger oil prints and have good matte effect. Brushed aluminum veneer can be used not only as building materials and decorative materials, but also in the metal box packaging of furniture, household appliances, electronic products and other products in daily life. The brushed aluminum veneer surface treatment process can not only brush away the small scratches on the surface of the aluminum veneer, but different texture effects can play various decorative roles in combination with design. In some retro architectural design styles, the brushed aluminum veneer with this special process can be used as decorative materials. The fashionable appearance and matte metal texture often bring strong visual impact, making the whole design style more gorgeous and unique.

# COATED ALUMINUM VENEER

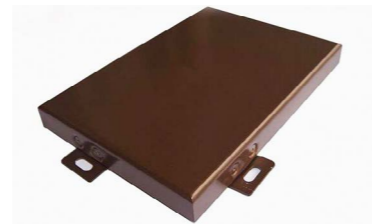
## 覆膜铝单板

### ■ 覆膜铝单板的特点

THE CHARACTERISTICS OF COATED ALUMINUM VENEER

覆膜铝单板，顾名思义就是覆上一层塑料薄膜，一般薄膜厚度在十二至二十微米。覆膜工艺在上世纪 80 年代随着改革开放进入我国，经过几十年技术不断的发展与改进，国内的覆膜工艺与国际接轨。覆膜工艺与辊涂工艺较大的一个不同点就是异形氟碳铝单板可以采用覆膜工艺。

Coated aluminum veneer, as the name implies, is covered with a layer of plastic film, generally with a film thickness of 12 to 20 microns. The film coating process entered China in the 1980s with the reform and opening up. After decades of continuous technological development and improvement, the domestic film coating process has been in line with the international standard. One big difference between the film coating process and the roll coating process is that the film coating process can be used for special-shaped fluorocarbon aluminum veneers.



### ■ 覆膜铝单板的性能

PERFORMANCE OF COATED ALUMINUM VENEER

覆膜铝板就是在铝板的表面覆一层 PVC、PET 膜，通常情况下有两种，一种单面覆膜板。一种是双面覆膜板。应用场景也是越来越广泛。目前使用最多的是幕墙板、护墙板。可以选择的款式也很多，例如有高光、木纹、纯色、石纹。覆膜铝板应用广泛，加工性能强，在加工上延展性非常强，可以做各种造型，折弯不发白、不爆裂。

Coated aluminum plate is on the surface of the aluminum plate covered with a layer of PVC, PET film, usually there are two kinds of a single coated plate. One is a double-sided laminate. Application scenarios are becoming more and more extensive. What use most at present is screen wall board, guard wall board. There are also many styles to choose such as highlight, wood grain, solid color, stone grain. Even coated aluminum plate is so widely used, the processing performance of coated aluminum plate in the processing of the ductility is very strong, can do all kinds of modeling, bending not white, not burst.



# IMITATION MARBLE ALUMINUM VENEER

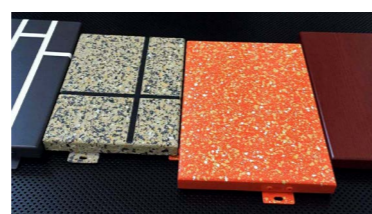
## 仿大理石铝单板

### 仿大理石铝单板的产品介绍

PRODUCT INTRODUCTION OF IMITATION MARBLE ALUMINUM VENEER

仿石铝单板是众多幕墙装饰材料中的一种，它的外观，纹路都与石材非常相似，在装饰的效果上与石材如一；在性能上，仿石铝单板的物理性能比石材更加优异；凭借本身的外观，物理性能等成为了石材的理想替代品。

Stone like aluminum veneer is one of many curtain wall decorative materials. Its appearance and grain are very similar to stone, and its decorative effect is the same as stone; In terms of performance, the physical performance of stone like aluminum veneer is better than that of stone; With its appearance and physical properties, it has become an ideal substitute for stone.

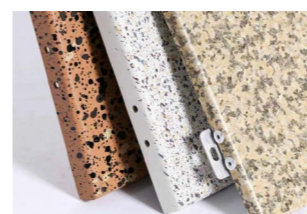


### 仿大理石铝单板的优点

ADVANTAGES OF IMITATION MARBLE ALUMINUM VENEER

仿石铝单板在装饰效果上与干挂大理石相同，它的使用通常也有两大类，一是室外的幕墙装饰，二是室内的墙面装饰。石材纹理虽然丰富，但是受限于材质本身，使用会有局限性，而仿石铝单板就很好的解决了这一弊端。

Stone like aluminum veneer is the same as dry hanging marble in decorative effect. It is usually used in two categories, one is outdoor curtain wall decoration, and the other is indoor wall decoration. Although the stone texture is rich, it is limited by the material itself, and the use of imitation stone aluminum veneer can solve this disadvantage.



# IMITATION WOOD GRAIN

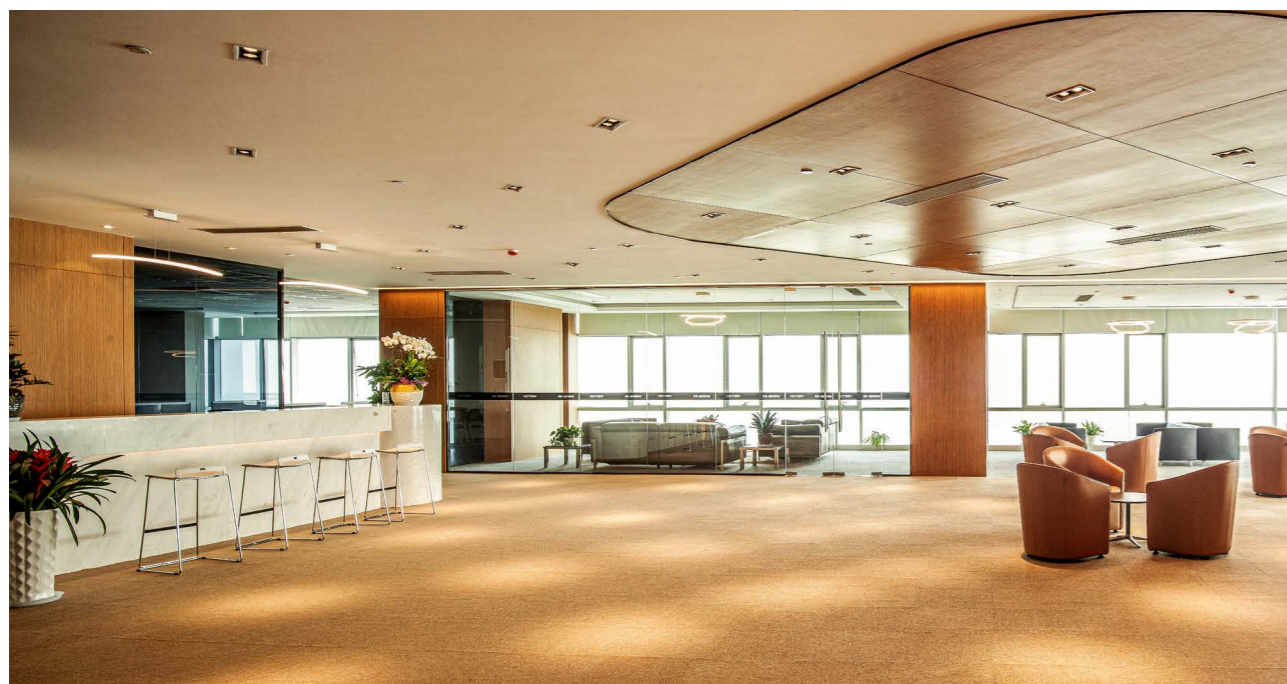
## 仿木纹铝单板

### 仿木纹铝单板的产品介绍

#### IMITATION WOOD GRAIN ALUMINUM VENEER PRODUCT INTRODUCTION

木纹铝单板采用国际先进新型图纹装饰材料，木纹铝单板图案高档华丽、纹理逼真、色泽鲜亮，图纹牢固耐磨，不含甲醛等有害气体。无毒有利于环保，使您不必再为装饰后油漆和胶类物质带来的异味及对身体的伤害而担忧。木纹铝单板品质卓越，是高档建筑装饰的首选材料。

Wood grain aluminum veneer adopts international advanced new pattern decorative materials, wood grain aluminum veneer pattern high-grade gorgeous, realistic texture, bright color, pattern firm wear-resistant, does not contain formaldehyde and other harmful gases. Non-toxic is beneficial to environmental protection, so that you do not have to be decorative paint and glue after the smell and harm to the body and worry. Wood grain aluminum veneer quality is excellent, is the first choice of high-grade building decoration material.



### 仿木纹铝单板的优点

#### ADVANTAGES OF IMITATION WOOD GRAIN ALUMINUM VENEER

仿木纹铝单板是以高等级铝合金为主要材料，绿景建材按工程现场设计的尺寸、形状和构造形式经过绿景建材数控折弯等技术成型，并在其表面氟碳喷涂的基础上采用意大利木纹膜，经抽真空处理，将木纹膜移印到铝单板的氟碳涂层上的一种高层次的金属装饰材。

木纹色凸显绿色环保的生活理念，体现出一种高层次奢华的建筑风格，缓解都市人紧张工作之余的压力，使人有置身大自然的感觉。仿木纹铝单板质量轻，硬度强，耐用，防潮防水，可塑性高，能利用各种地方进行装修设计，成为很多设计师的新宠儿。

Imitation wood grain aluminum veneer is a high-level metal decorative material, which is mainly made of high-grade aluminum alloy. Lvjing building materials is formed by numerical control bending and other technologies of Lvjing building materials according to the size, shape and structural form designed on the project site. On the basis of fluorocarbon spraying on its surface, Italian wood grain film is used. After vacuum treatment, the wood grain film is transferred onto the fluorocarbon coating of aluminum veneer. Wood grain color highlights the concept of green and environmental protection, reflects a high-level luxury architectural style, alleviates the pressure of urban people after work, and makes people feel like they are in nature. Imitation wood grain aluminum veneer is light in weight, strong in hardness, durable, moisture-proof and waterproof, and has high plasticity. It can be used for decoration design in various places, and has become a new favorite of many designers.

# EMBOSSSED ALUMINIUM VENEER

## 浮雕铝单板

### ■ 浮雕铝单板的产品介绍

#### PRODUCT INTRODUCTION OF EMBOSSSED ALUMINIUM VENEER

浮雕铝单板能够呈现出怀旧,复古的那种自然气息的感觉,有浮雕,木雕的特色风格。现代艺术风格,古典艺术风格等。展现出现代装饰家居中时尚风格,在不同空间均可营造出高贵,典雅,温馨的效果。浮雕出来的产品更加细腻真实,完美,图案生动形象,栩栩如生,像活着的事物一样给你真实的经典享受,给你历史沉淀的感叹。浮雕铝单板的特别适用于玄关、隔断、装饰等。

The embossed aluminum veneer can present a nostalgic and retro feeling of nature, with the characteristic style of embossment and wood carving. Modern art style, classical art style, etc. It shows the fashion style of modern decorative home, and can create noble, elegant and warm effects in different spaces. The embossed products are more delicate, real and perfect. The patterns are vivid and lifelike. Like living things, they give you real classic enjoyment and give you an exclamation of historical precipitation. Embossed aluminum veneer is especially suitable for porch, partition, decoration, etc.



### ■ 浮雕铝单板的性能

#### PERFORMANCE OF EMBOSSSED ALUMINIUM VENEER

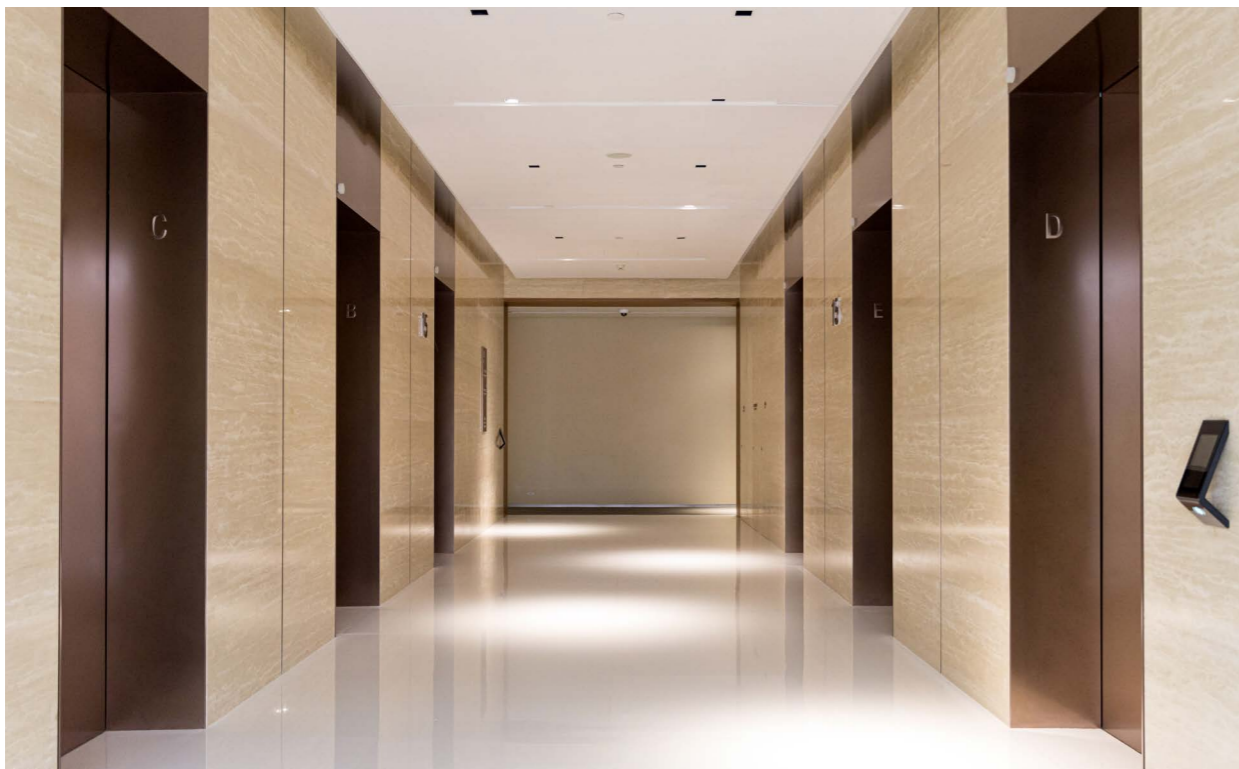
浮雕铝板是以高等级铝合金为主要材料,按工程现场设计的尺寸、形状和构造形式经过数控雕刻机雕刻成型,并在其表面做防古铜的一种高档新型金属装饰材料,浮雕铝板立体图案,逼真的效果,呈现简约美观,整体,可提升空间档次,图案丰富、经久耐用。

Embossed aluminum plate is a high-grade new-type metal decorative material with high-grade aluminum alloy as the main material, which is carved and formed by a numerical control engraving machine according to the size, shape and structural form designed on the project site, and the surface is made of anti bronze. The embossed aluminum plate has three-dimensional patterns, realistic effects, simple and beautiful appearance, and the whole can improve the spatial grade. The patterns are rich and durable.



# CERAMIC ALUMINIUM VENEER

## 陶瓷铝单板

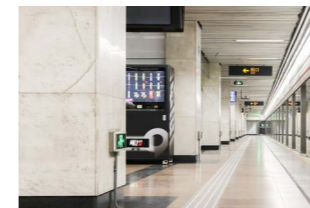


### 陶瓷铝单板的产品特点

#### PRODUCT CHARACTERISTICS OF CERAMIC ALUMINIUM VENEER

陶瓷铝单板是由高纯度陶瓷涂料涂层构成的优质环保型装饰材料。不易受腐蚀，便于清洁，无断裂、剥釉。表面的纯无机涂膜，即使经受高温火焰也不会产生有毒气体，属于 A 级防火材料，是高品质的内外墙环保装饰材料。

Ceramic aluminum veneer is a high-quality environmental friendly decorative material composed of high-purity ceramic coating. It is not easy to be corroded, easy to clean, and free from fracture and peeling. The pure inorganic coating film on the surface will not produce toxic gas even if it is subjected to high-temperature flame. It is a class A fireproof material and a high-quality environmental friendly decorative material for internal and external walls.



### 陶瓷铝单板的优点

#### ADVANTAGES OF CERAMIC ALUMINIUM VENEER

防腐：盐雾试验超过 2000 小时

耐火：能承受高温

耐酸碱：能经受化学药品的强蚀

易清洁：表面无孔，能抑制细菌生长，便于清洁

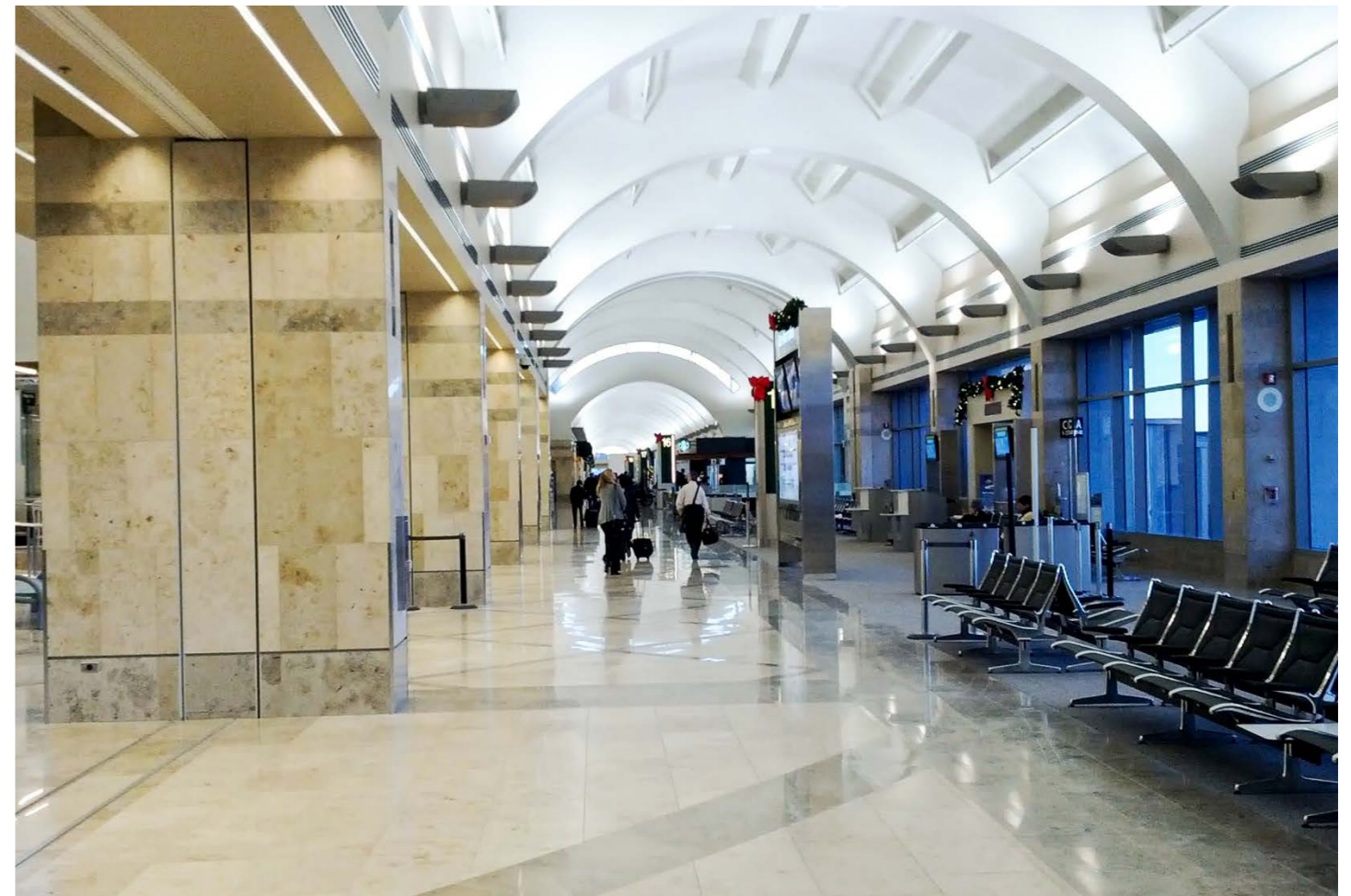
环保：不含对人体有害成份，原料出自矿物质

美观：颜色选择多样，自由调配

Corrosion protection: salt spray test more than 2000 hours  
Fire resistant: able to withstand high temperature  
Acid and alkali resistance: able to withstand strong corrosion of chemicals

Easy to clean: no pores on the surface, can suppress the growth of bacteria, easy to clean and environmental protection: no harmful ingredients to the human body, raw materials from minerals

beautiful: various colors, free to mix



# ROLL COATED ALUMINUM VENEER

## 辊涂铝单板

### ■ 辊涂铝单板的产品介绍

PRODUCT INTRODUCTION OF ROLL COATED ALUMINUM VENEER

辊涂铝单板是采用了连续的辊涂工艺，前处理与涂漆全过程自动化完成，从而保证其产品具有良好的颜色均匀性，不存在色差。预滚涂铝单板采用两次滚涂，两次烘烤，从而保证色彩的长期不变色、光泽如初。

Roll coated aluminum veneer adopts continuous roll coating process, and the whole process of pretreatment and painting is completed automatically, so as to ensure that its products have good color uniformity and no color difference. The pre roll coated aluminum plate adopts two roll coating and two baking, so as to ensure that the color does not change color for a long time and the luster remains the same.



### ■ 辊涂铝单板的产品介绍

PRODUCT INTRODUCTION OF ROLL COATED ALUMINUM VENEER

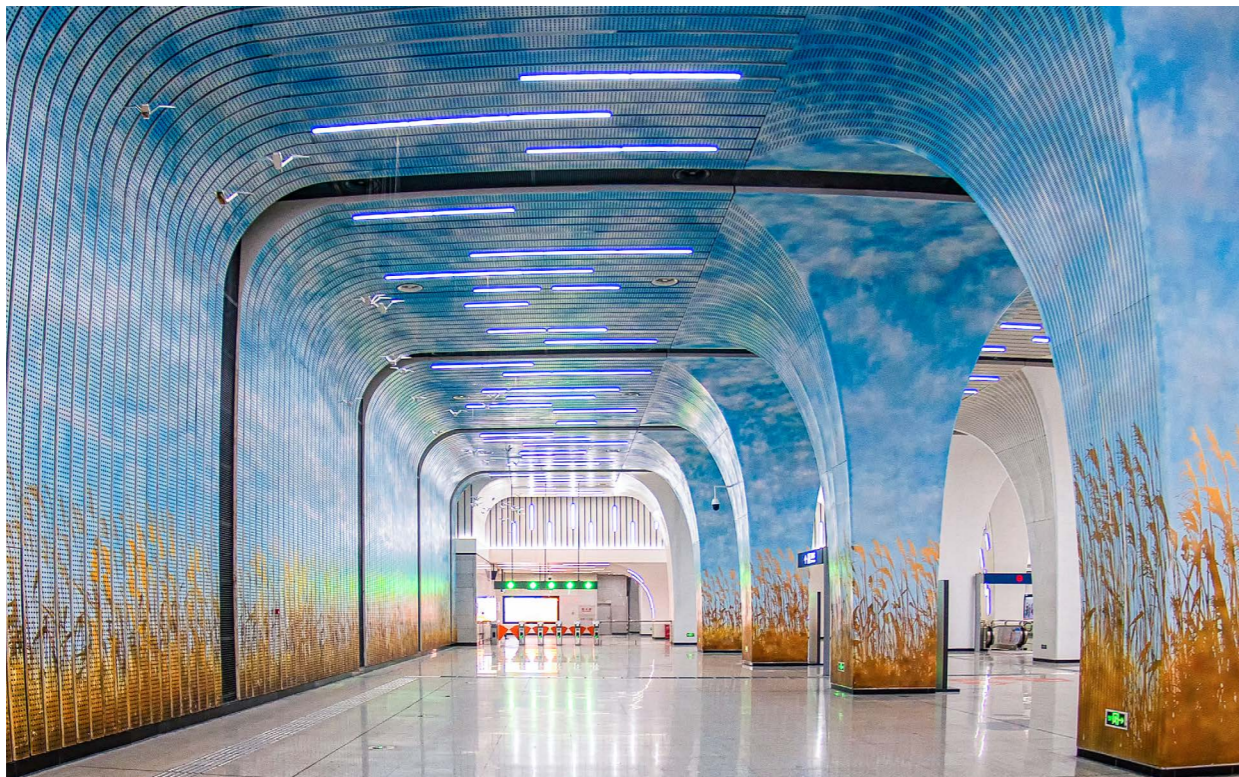
铝板辊涂技术由上世纪90年代从德国引进，氟碳辊涂铝单板是1mm-3mm厚铝板卷材，经过三涂两烤连续辊涂工艺加工而成，其氟碳表面处理具有卓越的耐候性能、优秀的表面流平性、易清洁维护和良好的耐酸碱性能，是大面积建筑物表皮常规平板装饰首先产品也是铝塑复合板的替代产品。

Aluminum plate roll coating technology was introduced from Germany in the 1990s. Fluorocarbon roll coated aluminum veneer is a 1mm-3mm thick aluminum plate coil processed by three coating and two baking continuous roll coating process. Its fluorocarbon surface treatment has excellent weather resistance, excellent surface smoothness, easy cleaning and maintenance, and good acid-base resistance. It is the first product of conventional flat plate decoration for large-area building skins and also a substitute for aluminum-plastic composite plates.



# SPRAY PAINTED ALUMINUM VENEER

## 喷绘铝单板



### ■ 喷绘铝单板的产品介绍 / SPRAY PAINTED ALUMINUM VENEER PRODUCT INTRODUCTION

随着时代的发展，在装饰建材行业领域，新型、创新、环保的产品越来越多，每一款热门的产品都是根据用户的使用反馈及周边环境需要而创造的。形式比较单调的装饰建材，单色喷涂的铝板再也不能满足人们的需求，而特色、新颖、创新的 3D 喷绘铝单板受到了大家的欢迎。

3D 喷绘铝单板是采用优质铝合金板材为基材，再经过数控折弯等技术成型，表面喷涂装饰性涂料的一种新型天花吊顶、内墙、外墙装饰材料。

With the development of The Times, there are more and more new, innovative and environmentally friendly products in the decorative building materials industry. Each popular product is created according to the user's feedback and the needs of the surrounding environment. The form of monotonous decorative building materials, monochrome spray aluminum plate can no longer meet the needs of people, and the characteristics, novel, innovative 3D spray aluminum veneer has been welcomed by everyone. 3D spray painted aluminum veneer is a new type of ceiling, inner wall and outer wall decorative material, which is made of high-quality aluminum alloy plate as the base material, and then formed by numerical control bending technology, and sprayed with decorative paint on the surface.

### ■ 喷绘铝单板的优点

#### ADVANTAGES OF SPRAY PAINTED ALUMINUM VENEER

3D 喷绘铝单板采用铝单板制作，可以根据图纸及用户要求设产各种形状、不规则的图案，花卉植物图案，欧式中式仿古图案等都可以，只要能输入电脑图案就可以生产出来，完全能够根据用户们的设计丰富幻想空间要求，达到美轮美奂的装饰效果！

3D spray painted aluminum veneer is made of aluminum veneer. It can produce various shapes and irregular patterns, flower and plant patterns, European and Chinese antique patterns, etc. according to the drawings and user requirements. As long as the patterns can be input into the computer, they can be produced. It can fully enrich the fantasy space requirements according to the user's design and achieve beautiful decorative effects!





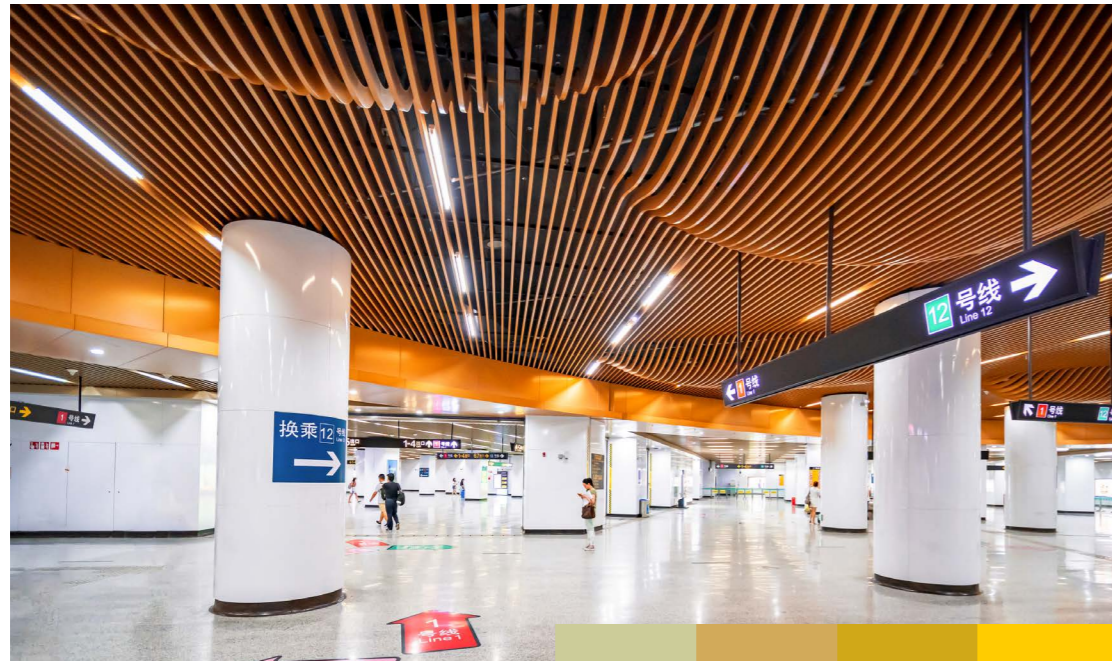
# ALUMINIUM CEILING SERIES

磐筑建材·铝天花系列

专业铝单板、金属天花系统供应商  
Professional aluminum veneer, metal ceiling system supplier

# ALUMINIUM CEILING SERIES

## 铝天花系列



RAL: 1000 RAL: 1001 RAL: 1002 RAL: 1003

\* 劳尔色卡

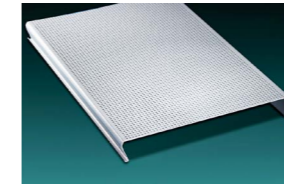
### 铝天花系列的产品介绍 / ALUMINUM SMALLPOX SERIES PRODUCT INTRODUCTION

铝天花产品,简单稳固,吊顶隐藏,上层的38主骨与下层的三角龙骨以牢固的井字形结构结合,安装及拆卸简便易行,表面十分平整,板与板之间的拼接是通过龙骨有次序搭折在一起的,板边独特的勾搭设计,能很好的控制板与板之间的活动性,从而确保了板与板之间的缝隙更严密平整。

根据实际空间的需要,灵活设计天花板面的尺寸。固定龙骨系统后,可徒手装卸,不需要任何辅助工具,灵活简易,龙骨系统配有防风码结构,其功能可以在暴风气候下,结构牢固。实用设计成各种装饰效果及形状。被广泛应用于天花活动性能要求较高的场所。

Aluminum smallpox product, simple and stable, condole top hidden, 38 of the upper primary bone and the lower triangular keel with strong well glyph structure, easy installation and removal, the surface is very smooth, board with board between stitching is through the keel has order a fold together, edge unique seduce a design, can be a very good control board with board between activity, Thus ensuring that the gap between the plate and the plate is more tight and smooth.

According to the needs of actual space, flexible design ceiling dimensions. Fixed keel system, free hand loading and unloading, do not need any auxiliary tools, flexible and simple, keel system is equipped with wind code structure, its function can be in the storm climate, the structure is firm. Practical design into a variety of decorative effects and shapes. It is widely used in the places where smallpox activity performance requirements are higher.



条扣铝天花  
Strip buckle aluminum ceiling



明架铝扣板  
Exposed aluminum gusset plate



暗架式铝天花  
Dark frame type aluminum ceiling

### 铝天花系列的性能 / ALUMINUM CEILING SERIES PERFORMANCE

优良的板面涂层性能:优质的铝扣板一般采用优质涂料,由进口全自动高速涂装线涂装,板面平整,无色差,涂层附着力强,能耐酸、碱、盐雾的侵蚀,长时间不变色,涂料不脱落,氟碳涂层板是户外使用的极为理想的装饰材料,且保养方便,用水冲洗便洁净如新。

极强的复合牢度:优质的铝扣板精选高聚塑料与高分子材料经热压复合而成,一般经2小时沸水试验无粘层破坏现象。

适温性强:铝扣板一般可在较大的温度变化下使用,其优良性能不受影响。

Excellent coating performance of plate surface: high quality aluminum gusset plate is generally coated with high-quality coating by imported full-automatic high-speed coating line. The plate surface is flat and free of color difference. The coating has strong adhesion, can resist acid, alkali and salt fog erosion, does not change color for a long time, and the coating does not fall off. Fluorocarbon coated plate is an ideal decorative material for outdoor use, and it is easy to maintain. It is clean as new after washing with water.

Extremely strong composite fastness: the high-quality aluminum gusset plate is made of selected high polymer plastics and polymer materials by hot pressing. Generally, after 2 hours of boiling water test, there is no damage to the adhesive layer. Strong temperature adaptability: Aluminum gusset plate can generally be used under large temperature changes, and its excellent performance will not be affected.



# ABNORMAL CEILING

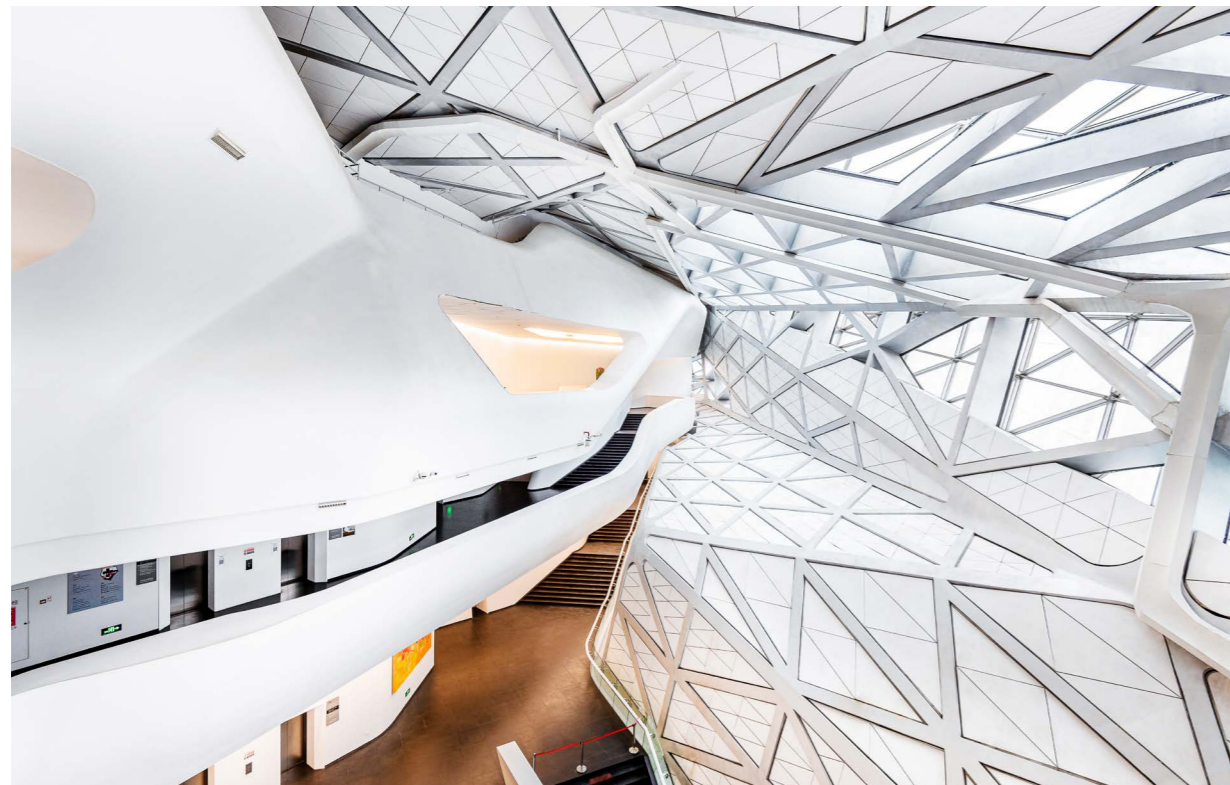
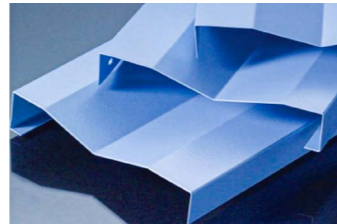
## 异形天花

### ■ 异形天花的产品介绍

#### SPECIAL-SHAPED SMALLPOX PRODUCT INTRODUCTION

异形天花是设计风格独特、结构随意、造型各异的建筑吊顶。异型天花融合了现代装饰的使用功能和极具时代感的设计效果，使材料的本质精华得到充分的体现，从而使空间延伸在此得到充分释放。

Special shaped ceiling is a building ceiling with unique design style, random structure and different shapes. The special-shaped ceiling integrates the use function of modern decoration and the design effect with a sense of the times, so that the essence essence of materials is fully reflected, and the space extension is fully released here.

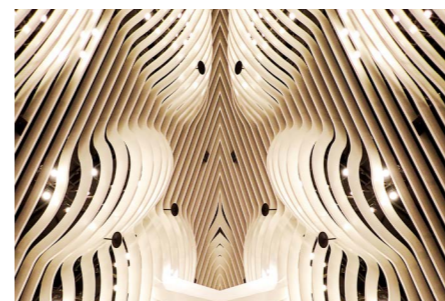


### ■ 异形天花的特点

#### CHARACTERISTICS OF SPECIAL SHAPED SMALLPOX

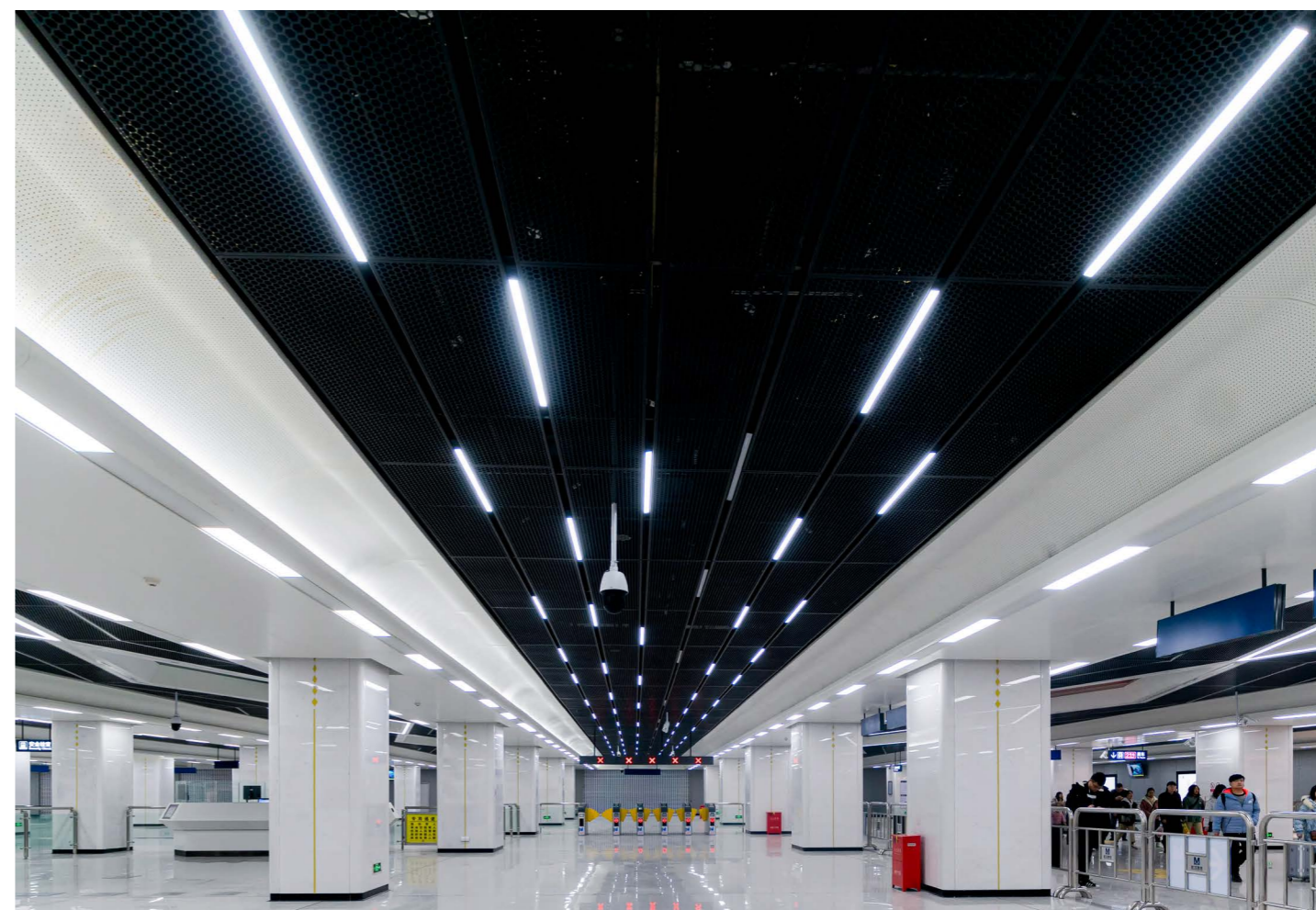
异形天花样式多样化，可量身定造，能够完美的体现出设计师具有艺术化的奇巧构思；甚至在整个建筑中起到画龙点睛的作用。它主导和推动天花吊顶的新潮流。有混合型，拱形，筒型，勾搭型等类型。

The special-shaped ceiling has diversified styles and can be customized, which can perfectly reflect the designer's artistic and ingenious ideas; It even serves as the finishing touch in the whole building. It leads and promotes the new trend of ceiling. There are mixed type, arch type, simple type and hook up type.



# WIRE MESH ALUMINUM CEILING

## 拉网铝天花



### ■ 拉网铝天花的特点 / CHARACTERISTICS OF WIRE MESH ALUMINUM CEILING

拉网铝单板韧性好、重量轻、强度高。拉网铝单板耐腐蚀性能好，氟碳漆可达25年不褪色。拉网铝单板工艺性好。采用先加工后喷漆工艺，铝板可加工成平面、弧型和球面等各种复杂几何形状。

拉网铝单板不易沾污，便于清洁保养。氟涂膜的非粘着性，使表面很难附着污染物，并且具有良好的清洁度。拉网铝单板安装施工方便快捷。铝板在工厂成型，施工现场不需裁切只需简单固定。拉网铝单板可回收再利用，有利环保。铝板可100%回收，回收价值更高。

Brushed aluminum veneer has good rigidity, light weight and high strength. The aluminum veneer with wire mesh has good corrosion resistance, and the fluorocarbon paint can last for 25 years. Wire drawing aluminum veneer has good processability. The aluminum plate can be processed into various complex geometries such as plane, arc and spherical shapes by the process of processing first and then painting.

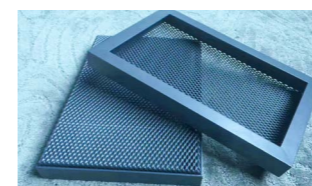
The brushed aluminum veneer is not easy to stain and is easy to clean and maintain. The non adhesion of fluorine coating film makes it difficult to attach pollutants to the surface and has good cleanliness. The installation and construction of mesh aluminum veneer is convenient and fast. The aluminum plate is formed in the factory, and it needs no cutting on the construction site, only simple fixation. The brushed aluminum veneer can be recycled, which is beneficial to environmental protection. Aluminum plate can be 100% recycled, and the recycling value is higher.

### ■ 拉网铝天花的应用范围

#### APPLICATION RANGE OF WIRE MESH ALUMINUM CEILING

拉网铝天花适用于各种金属幕墙板和金属天花吊顶板。适用于多种生活工作场所，如：室内、室外、机场地铁、轻轨、车站、展馆、体育馆、图书馆、行政办公大楼，商业楼等各种场所，同时也符合环保要求。

Wire mesh aluminum ceiling is suitable for various metal curtain wall panels and metal ceiling ceiling panels. It is applicable to a variety of living and working places, such as indoor, outdoor, subway, light rail, station, exhibition hall, gymnasium, library, administrative office building, commercial building and other places, and also meets the requirements of environmental protection.



# PROFILE SQUARE

## 型材方通



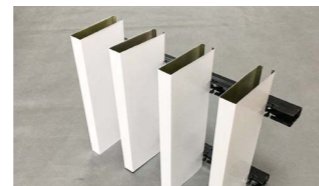
### ■ 型材方通的产品介绍

#### PRODUCT INTRODUCTION OF PROFILE SQUARE

型材方通由优质铝材通风挤压成型，产品硬度，直线度远远超过其它方通产品，安装结构为利用上层主骨，以螺丝和特造的构件与型材锤片连接，防风性强，适用于室内装饰（龙骨间距可任意调节）。特殊的型材方通可拉弯成弧形，也可以做成造型，弧形、造型型材方通的出现为设计师提供更为广阔的构想空间，以创造出更独特美观的作品。

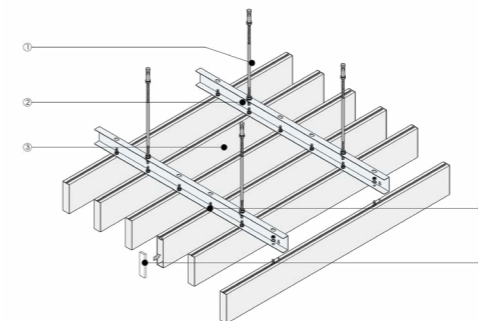
The profile square is formed by high-quality aluminum ventilation extrusion. The hardness and straightness of the product are far higher than other square products. The installation structure is to use the upper main bone to connect with the profile hammer with screws and special components. It has strong wind resistance and is suitable for indoor decoration (the keel spacing can be adjusted at will).

The special profile square can be pulled and bent into an arc or shaped into a shape. The appearance of the arc and shaped profile square provides designers with broader conceptual space to create more unique and beautiful works.



### ■ 型材方通安装结构图

#### Profile square pass installation structure drawing



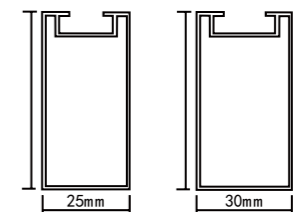
① M8 吊杆	M8 Hanging Rod
② 方管龙骨	Square Tube Keel
③ 方型铝通	Square Aluminum Tee
④ M6 螺丝	M6 Screw
⑤ 方型铝通封头盖	Square Aluminum Tee End Cover

### ■ 型材方通的应用范围

#### APPLICATION RANGE OF PROFILE SQUARE

广泛应用于走廊、酒吧、商场、写字楼、图书馆、会所、会展、地铁站、机场等场所。

Widely used in corridors, bars, shopping malls, office buildings, libraries, clubs, exhibitions, subway stations, airports and other places.



# ALUMINIUM WINDOW

## 铝窗花

### ■ 铝窗花的产品介绍

PRODUCT INTRODUCTION OF ALUMINUM WINDOW FLOWER

铝窗花一种由铝合金材质制作而成的防盗网，起到窗户、阳台防护和防盗作用。铝窗花继承了不锈钢不锈的特点，又继承了铁制防盗网制作成为不同花型的基本特点，是一种潮流新品。

Aluminum window grill is a kind of anti-theft net made of aluminum alloy, which plays the role of window and balcony protection and anti-theft. Aluminum window grilles inherit the stainless steel's stainless characteristics and the basic characteristics of different patterns made of iron anti-theft nets. It is a new trend.



### ■ 铝窗花的优点 / ADVANTAGES OF ALUMINUM WINDOW FLOWERS



颜色多样：市场上的不锈钢和铁制防盗网在颜色上比较的单一，无法满足不同人对不同颜色的偏好。而铝窗花则有多种颜色选择，基本上满足了颜色的需求。

市场上很多玻璃窗是铝合金的，而铝窗花也是铝合金的，两者的相结合比与其他产品搭配要协调很多，这是铝窗花能稳住市场的重要原因。

安装方便：铝窗花安装比其他防盗网安装要方便很多，无需较高的工艺即可完成铝窗花的安装，外行人容易上手。

款式多：铝窗花一般花型选择达到上百款之多，每一款都有其物理特点，使得每一款铝窗花都具有其独特的特性。

Color diversity: the stainless steel and iron anti-theft nets on the market are relatively single in color, which can not meet the preferences of different people for different colors. Aluminum window grilles have a variety of colors to choose from, which basically meets the needs of color.

Many glass windows in the market are made of aluminum alloy, and aluminum window grilles are also made of aluminum alloy. The combination of the two is much more harmonious than that of other products, which is an important reason why aluminum window grilles can stabilize the market.

Easy installation: aluminum window pane installation is much more convenient than other anti-theft nets. Aluminum window pane installation can be completed without high technology, which is easy for laymen to get started.

Many styles: generally, hundreds of aluminum window patterns are selected, and each has its own physical characteristics, which makes each aluminum window pattern have its own unique characteristics.

# ALUMINUM SQUARE

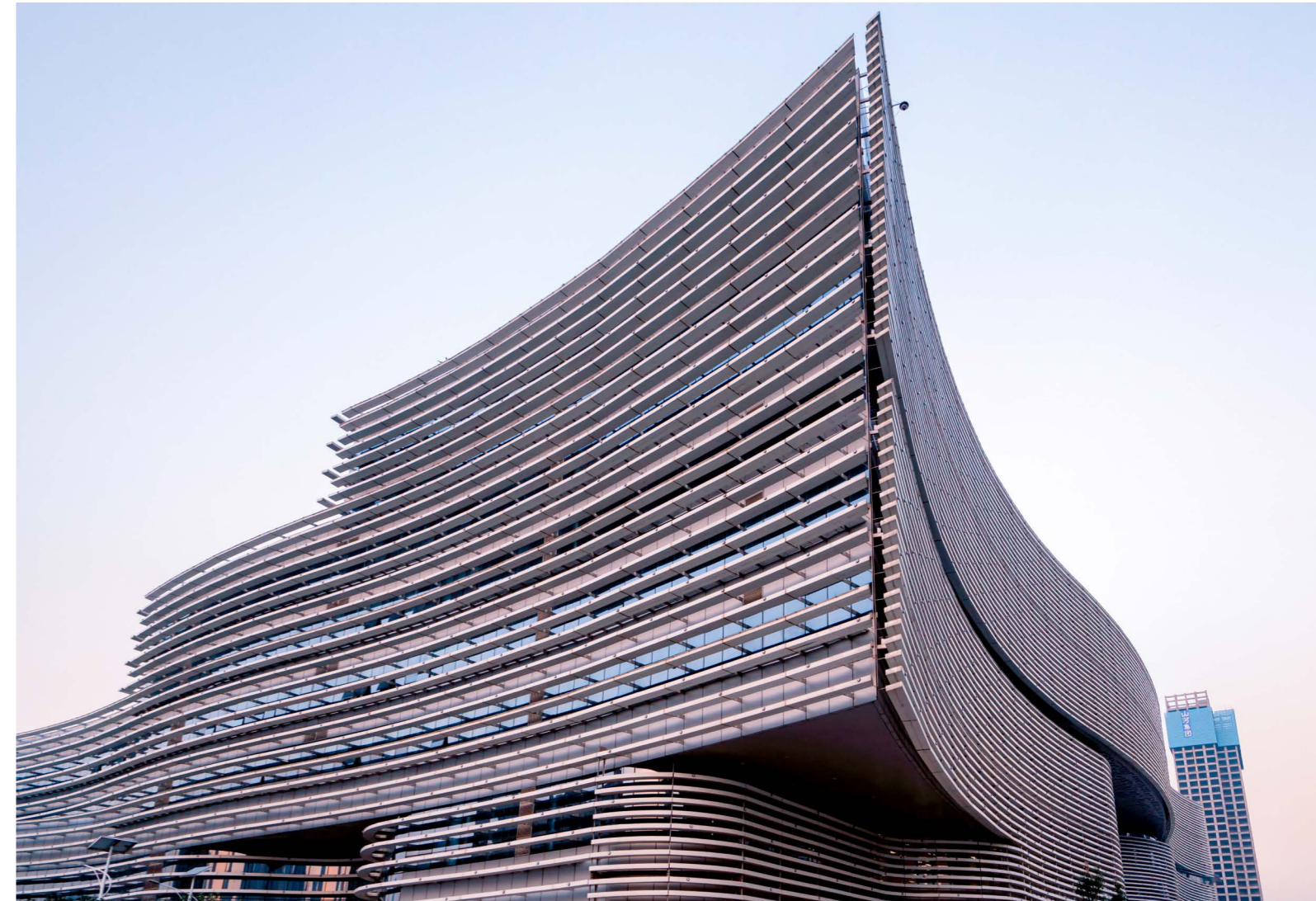
## 铝方通

### 铝方通的特点

#### FEATURES OF ALUMINUM SQUARE

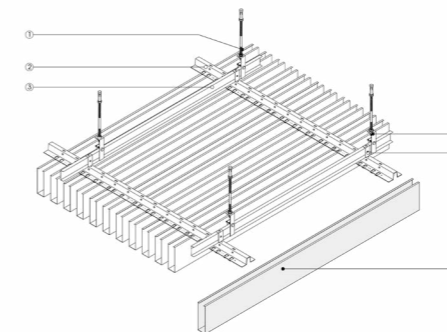
U型铝方通也称作型材方通、铝U型槽方通、铝材方通等，其成型工艺主要为挤压。先根据型材产品断面设计、制造出模具，利用挤压机将加热好的圆铸棒从模具中挤出成形，在挤压时还用了一个风冷淬火过程及其后的人工时效过程，以完成热处理强化，提升铝材的性能，这样便得到了铝材的坯料，然后就可以根据不同的要求对铝材进行表面涂层处理，如氧化着色、木纹转印、各种颜色喷涂烤漆处理等。

U-shaped aluminum square pass is also known as profile square pass, aluminum U-shaped groove square pass, aluminum square pass, etc., and its forming process is mainly extrusion. First according to the profile section of product design, manufacturing mold, using extrusion machine heating good round casting rod extrusion forming of the mould, and with an air cooling quenching during extrusion process and after artificial aging process, to complete the heat treatment to strengthen and improve the performance of the aluminum, thus obtained the aluminum billet, and then you can according to the requirements of different coating on aluminum surface treatment, Such as oxidation coloring, wood grain transfer, all kinds of color spraying paint treatment.



### 铝方通安装结构图

#### INSTALLATION STRUCTURE DRAWING OF ALUMINUM SQUARE



M8 吊杆	M8 Hanging Rod
主龙骨吊件	Main keel Hanger
主龙骨	Main keel
U型平面条扣	U-shaped Flat Strip Buckle
U型条扣龙骨吊件	U-shaped Buckle keel Hanger
U型条扣龙骨	U-shaped Buckle keel

### 铝方通的应用范围

#### APPLICATION RANGE OF ALUMINUM SQUARE

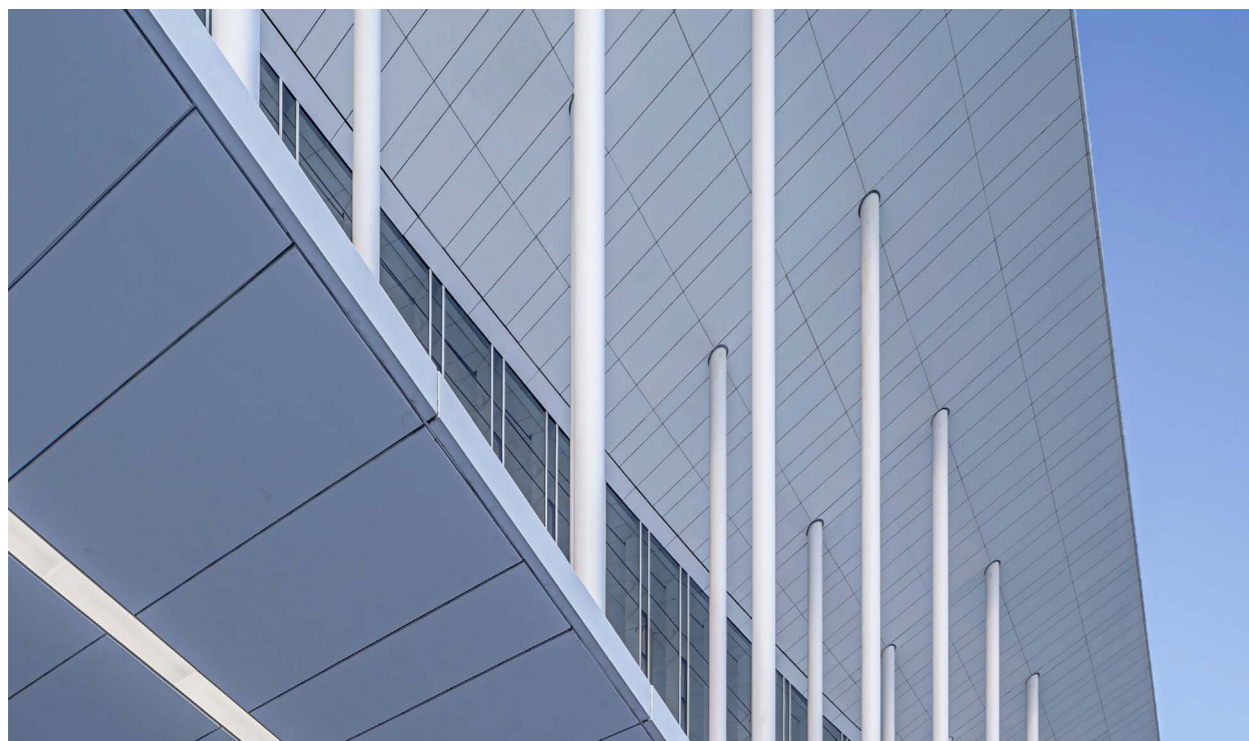
铝方通产品广泛应用于车站，地铁，高铁站，网吧、咖啡厅等休闲场所，以及机场，大型购物商场，通道，高等公共卫生间，建筑物外墙装饰等开放式场所。

Aluminum Fangtong products are widely used in stations, subway, high-speed railway stations, Internet cafes, cafes and other leisure places, as well as open places such as airports, large shopping malls, passages, high-level public toilets, and building exterior wall decoration.

# ALUMINUM HONEYCOMB PANEL

## 铝蜂窝板

### 铝蜂窝板的产品特点 / ALUMINUM HONEYCOMB PANEL PRODUCT CHARACTERISTICS

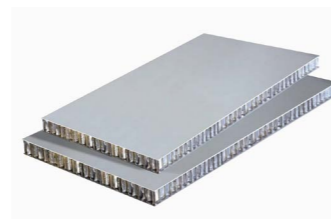


### 铝蜂窝板的产品介绍

#### PRODUCT INTRODUCTION OF ALUMINUM HONEYCOMB PANEL

铝蜂窝板，适用于民用建筑、车船装饰等。是航空、航天材料在民用建筑领域的应用。整个加工过程全部在现代化工厂完成，采用热压成型技术，因铝皮和蜂窝间的高热传导值，内外铝皮的热胀冷缩同步；蜂窝铝皮上有小孔，使板内气体可以自由流动；可滑动安装扣系统在热胀冷缩时不会引起结构变形。

Aluminum honeycomb panel, suitable for civil buildings, vehicle and ship decoration, etc. It is the application of aviation and aerospace materials in the field of civil buildings. The whole processing process is completed in a modern chemical plant, using hot press forming technology. Due to the high thermal conductivity between the aluminum sheet and the honeycomb, the thermal expansion and cold contraction of the inner and outer aluminum sheets are synchronized; There are small holes in the honeycomb aluminum sheet, so that the gas in the plate can flow freely; The slidable mounting buckle system will not cause structural deformation during thermal expansion and cold contraction.



中心为铝质六边形蜂窝，密度小（每平方米大约为3~7公斤），是同厚度同面积木板重量的1/5，玻璃的1/6、铝材的1/7，大大降低建筑载荷和造价，由于中间夹层含大量空气，可隔音（空气隔声量可达30dB）、隔热（热阻可达 $0.02(\text{m}^2 \cdot \text{K}/\text{W})$ ），无可燃物质，防火等级达到B1级，防水、防潮、无有害气体释放，单位质量的比强度大、比刚度高（结构刚度为肋式的1.7倍），不易变形，完全克服了其它装饰板在单块面积大时的变形、中间塌陷等缺点加工应用方便，可任意切割折边，表面氟碳涂层可保产品寿命在30年以上，铝蜂窝板表面具有极高的平整度，抗震性能好，仅为玻璃幕墙比重的八分之一；22mm厚标准件在1米简支、挠度为10mm时荷载可达到700公斤力以上。

The center is an aluminum hexagonal honeycomb, with a small density (about 3-7 kilograms per square meter), which is 1/5 of the weight of wood boards of the same thickness and area, 1/6 of glass and 1/7 of aluminum materials, which greatly reduces the building load and cost. Because the interlayer contains a lot of air, it can be sound insulated (the air sound insulation capacity can reach 30dB), heat insulated (the thermal resistance can reach  $0.02(\text{m}^2 \cdot \text{K}/\text{W})$ ), free of combustible substances, and the fire rating can reach B1. It is waterproof, moisture-proof and free of harmful gas. The specific strength per unit mass is large and the specific stiffness is high (the structural stiffness is 1.7 times of the rib type), which is not easy to deform. It completely overcomes the defects of other decorative panels such as deformation and collapse in the middle when the single area is large. It is easy to process and apply. It can be cut and folded at will. The fluorocarbon coating on the surface can ensure the product life of more than 30 years. The surface of aluminum honeycomb panel has extremely high flatness and good seismic performance, which is only one eighth of the proportion of glass curtain wall; When the 22mm thick standard part is simply supported at 1m and the deflection is 10mm, the load can reach more than 700kg force.

# ANODIZED ALUMINUM HONEYCOMB PLATE

## 阳极氧化铝蜂窝板

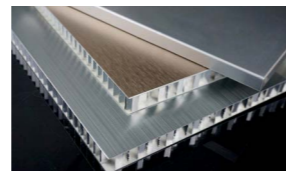
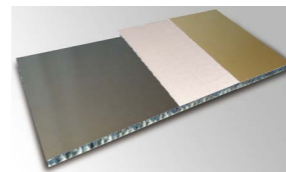


### ■ 阳极氧化铝蜂窝板的产品介绍

PRODUCT INTRODUCTION OF ANODIZED ALUMINUM HONEYCOMB PANEL

阳极氧化铝蜂窝板采用轻量化的层板与蜂窝铝芯通过航空复合技术融为一体，可提供很好的面板强度和平整度。并能展现设计元素，将功能和美学结合。阳极氧化铝蜂窝板面板表面可采用光面、缎面、压纹等多种处理工艺，颜色包罗万象，配合不同设计。

Anodised aluminum honeycomb panel adopts lightweight laminate and honeycomb aluminum core, which are integrated by aviation composite technology, which can provide good panel strength and flatness. It can show design elements and combine function with aesthetics. The surface of the anodized aluminum honeycomb panel can be treated by various processes such as smooth, satin and embossing, with all colors and different designs.



### ■ 阳极氧化铝蜂窝板的优点 / ADVANTAGES OF ANODIZED ALUMINUM HONEYCOMB PANEL

- (1) 防火：铝板为不燃材料。
- (2) 耐腐蚀：铝蜂窝板是表面经环氧氟碳处理，具有较强的耐腐蚀性。盐雾喷射 48 小时无针孔、裂纹、不起泡。
- (3) 环保：蜂窝板属纯铝制产品，不挥发任何对人体有害的气体，无放射性并可完全回收利用，百分百的环保型产品。
- (4) 铝蜂窝板容易拆除组装，且不会拆坏板材。由于其重量轻、运输方便固可运到不同的地方多次重复利用。这是其它隔断板材不能与之比拟的。

- (1) fire prevention: aluminum plate is non-combustible material.
- (2) Corrosion resistance: the surface of aluminum honeycomb plate is treated by epoxy fluorocarbon, which has strong corrosion resistance. No pinhole, crack and bubbling after 48 hours of salt spray spraying.
- (3) Environmental protection: honeycomb panel is a pure aluminum product, does not volatilize any harmful gas to human body, no radioactivity and can be completely recycled, 100 percent environmental protection products.
- (4) Aluminum honeycomb panel is easy to dismantle and assemble, and will not destroy the plate. Due to its light weight and convenient transportation, it can be transported to different places for multiple reuse. This is other partition plate can not be compared with.

# ALUMINUM CORRUGATED PLATE

## 铝瓦楞板

### ■ 铝瓦楞板的产品介绍

#### ALUMINUM CORRUGATED BOARD PRODUCT INTRODUCTION

铝瓦楞板，又称为瓦楞铝板、压型铝板、铝瓦等，是采用铝板经过辊压冷弯成各种波形的压型板。因其可塑性好，故能较好地适应各种建筑造型的要求，外观美观、颜色耐久、环保可利用、施工方便快捷、抗震、防火防雨、寿命长、免维护等其特点。

Aluminum corrugated plate, also known as corrugated aluminum plate, pressed aluminum plate, aluminum tile, etc., is the aluminum plate through roller cold bending into a variety of waveforms of the pressed plate. Because of its good plasticity, it can better adapt to the requirements of various building modeling, beautiful appearance, color durability, environmental protection can be used, convenient construction, earthquake, fire and rain, long life, maintenance free and so on.



### ■ 铝瓦楞板的特点

#### CHARACTERISTICS OF ALUMINUM CORRUGATED BOARD

它适用于工业与民用建筑、仓库、特种建筑、大跨度钢结构房屋的屋面、墙面以及内外墙装饰等，具有质轻、高强、色泽丰富、施工方便快捷、抗震、防火、防雨、寿命长、免维护等特点，现已被广泛应用。

It is applicable to the roof, wall and interior and exterior wall decoration of industrial and civil buildings, warehouses, special buildings and large-span steel structure houses. It has the characteristics of light weight, high strength, rich color, convenient and fast construction, earthquake resistance, fire prevention, rain protection, long service life and maintenance free. It has been widely promoted and applied.



# ALUMINUM SQUARE TUBE LATTICE

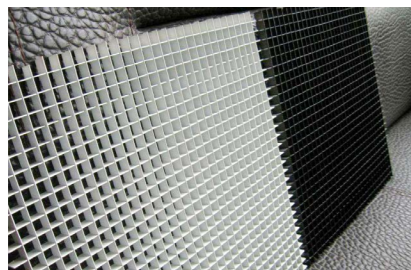
## 铝方管花格

### ■ 铝方管花格的介绍

#### INTRODUCTION OF ALUMINUM SQUARE TUBE LATTICE

铝方管花格，艺术铝花格，时尚精美，不仅能满足人们日益提高的对生活环境品质的追求，铝方管花格产品还填补了国内以金属材料替代原木建筑装饰的空白，可以提高建筑、装饰、园林及市政设施的档次，带动建筑装饰、园林及市政等行业环保材料的发展。

Aluminum checked aluminum square tube plaids, art, fashion beautiful, can not only meet people's increasing pursuit of living environment quality, also product fills the domestic aluminum square tube beautiful case to replace the blank of log building decoration metal materials, can improve the grade of the construction, decoration, landscape and municipal facilities, building decoration, garden and municipal sectors such as the development of environmental protection material.



### ■ 铝方管花格的特点 / CHARACTERISTICS OF ALUMINUM SQUARE TUBE LATTICE

铝方管花格简约、素雅，采用一致的色调。空间中的整体设计风格，带有浓浓的中国风，特别是外窗装饰大堂、走廊、办公室和房间空间的设计与规划，极能感受到浓厚的东方色彩。而这也正是当代极力铺陈表现的现代风格。

The aluminum square tube lattice is simple, simple and elegant, with a consistent tone. The overall design style of the space, with a strong Chinese style, especially the outer window decoration, lobby, corridor, office and room space design and planning, can feel a strong Oriental color. And this is exactly the contemporary style that tries to express.



# PROJECT CASE

工程案例篇





中国项目参考 / DOMESTIC PROJECT REFERENCE

## 梅溪湖大剧院

### Meixi Lake Grand Theater

项目位置 / Location

中国长沙 · 梅溪湖国际新城

Changsha, China · Meixi Lake International New Town

专业铝单板、金属天花系统供应商

PROFESSIONAL ALUMINUM SHEET, METAL CEILING SYSTEM SUPPLIER

#### ■ 系统说明 / System Note

磐筑可按此类项目要求提供外墙铝幕墙板、铝蜂窝板、冲孔/异形铝板及室内金属天花系统。

PUNCHUK supplies aluminum curtain wall panels, honeycomb panels, perforated or shaped aluminum panels, and interior metal ceiling systems for projects of this type.

外立面可对应弧形铝单板、氟碳铝板及室内金属天花配套。



中国项目参考 / DOMESTIC PROJECT REFERENCE

## 重庆璧山艺术中心

### Chongqing Bishan Art Center

项目位置 / Location

中国重庆 · 璧山区双星大道

Chongqing, China · Shuangxing Avenue, Bishan District

专业铝单板、金属天花系统供应商

PROFESSIONAL ALUMINUM SHEET, METAL CEILING SYSTEM SUPPLIER

#### ■ 系统说明 / System Note

磐筑可按此类项目要求提供外墙铝幕墙板、铝蜂窝板、冲孔/异形铝板及室内金属天花系统。

PUNCHUK supplies aluminum curtain wall panels, honeycomb panels, perforated or shaped aluminum panels, and interior metal ceiling systems for projects of this type.

适用于三角分格铝幕墙板、异形板、穿孔板及节点深化加工。



中国项目参考 / DOMESTIC PROJECT REFERENCE

## 哈尔滨大剧院 Harbin Grand Theater

项目位置 / Location

中国哈尔滨 · 松北文化中心岛

Harbin, China · Songbei Cultural Center Island

专业铝单板、金属天花系统供应商

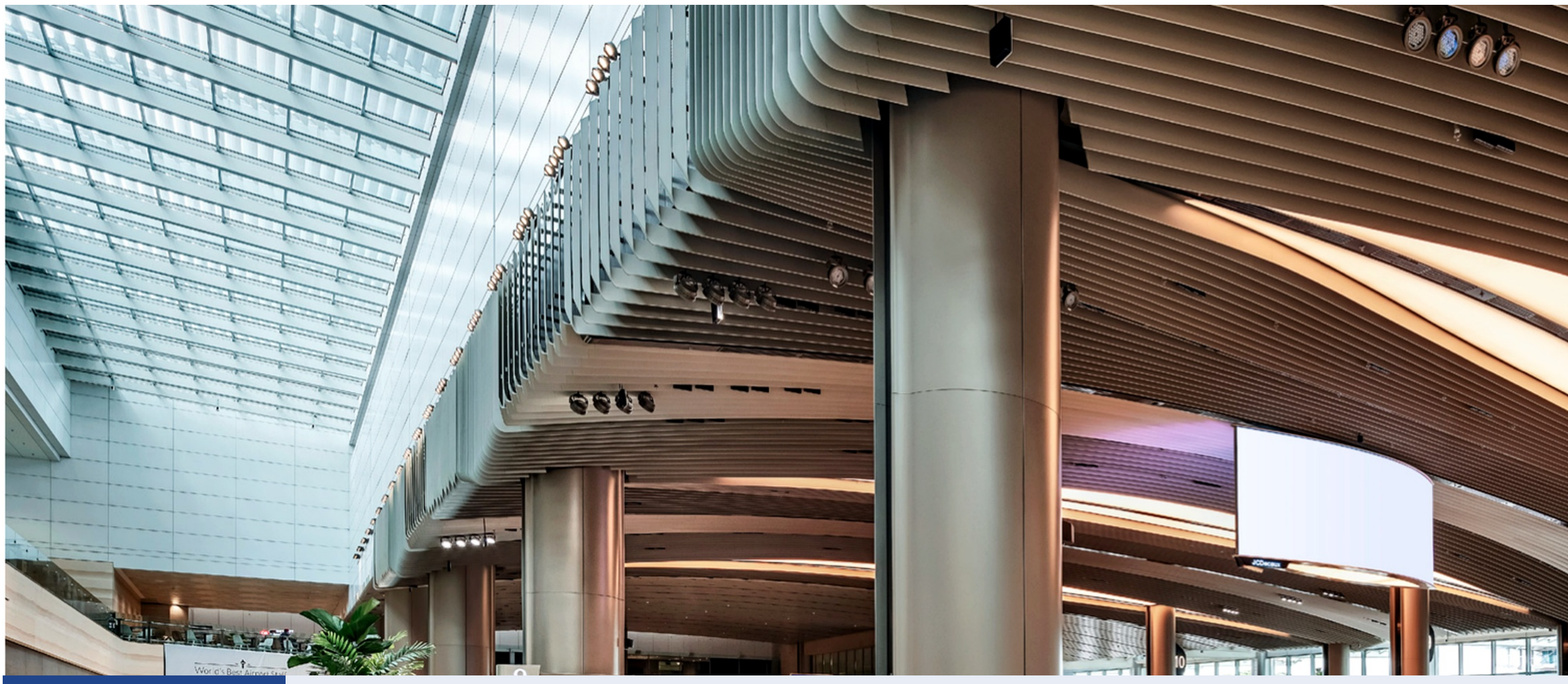
PROFESSIONAL ALUMINUM SHEET, METAL CEILING SYSTEM SUPPLIER

### ■ 系统说明 / System Note

磐筑可按此类项目要求提供外墙铝幕墙板、铝蜂窝板、冲孔/异形铝板及室内金属天花系统。

PUNCHUK supplies aluminum curtain wall panels, honeycomb panels, perforated or shaped aluminum panels, and interior metal ceiling systems for projects of this type.

可对应双曲铝单板、蜂窝板、室内吊顶和复杂曲面分格系统。



海外应用参考 / OVERSEAS APPLICATION REFERENCE

## 新加坡樟宜机场 T2 航站楼

### Changi Airport Terminal 2

项目位置 / Location

新加坡 · 樟宜机场东部航站楼区域

Singapore · Changi Airport eastern terminal precinct

专业铝单板、金属天花系统供应商

PROFESSIONAL ALUMINUM SHEET, METAL CEILING SYSTEM SUPPLIER

#### ■ 系统说明 / System Note

磐筑可按此类项目要求提供外墙铝幕墙板、铝蜂窝板、冲孔/异形铝板及室内金属天花系统。

PUNCHUK supplies aluminum curtain wall panels, honeycomb panels, perforated or shaped aluminum panels, and interior metal ceiling systems for projects of this type.

大面积铝制弧形 baffle 与穿孔金属天花，适合作为机场、交通枢纽和商业公共区的室内铝制品参考。



海外应用参考 / OVERSEAS APPLICATION REFERENCE

## 曼谷 Central Embassy Central Embassy Bangkok

项目位置 / Location

泰国曼谷 · Phloen Chit 商业核心区

Bangkok, Thailand · Phloen Chit commercial district

专业铝单板、金属天花系统供应商

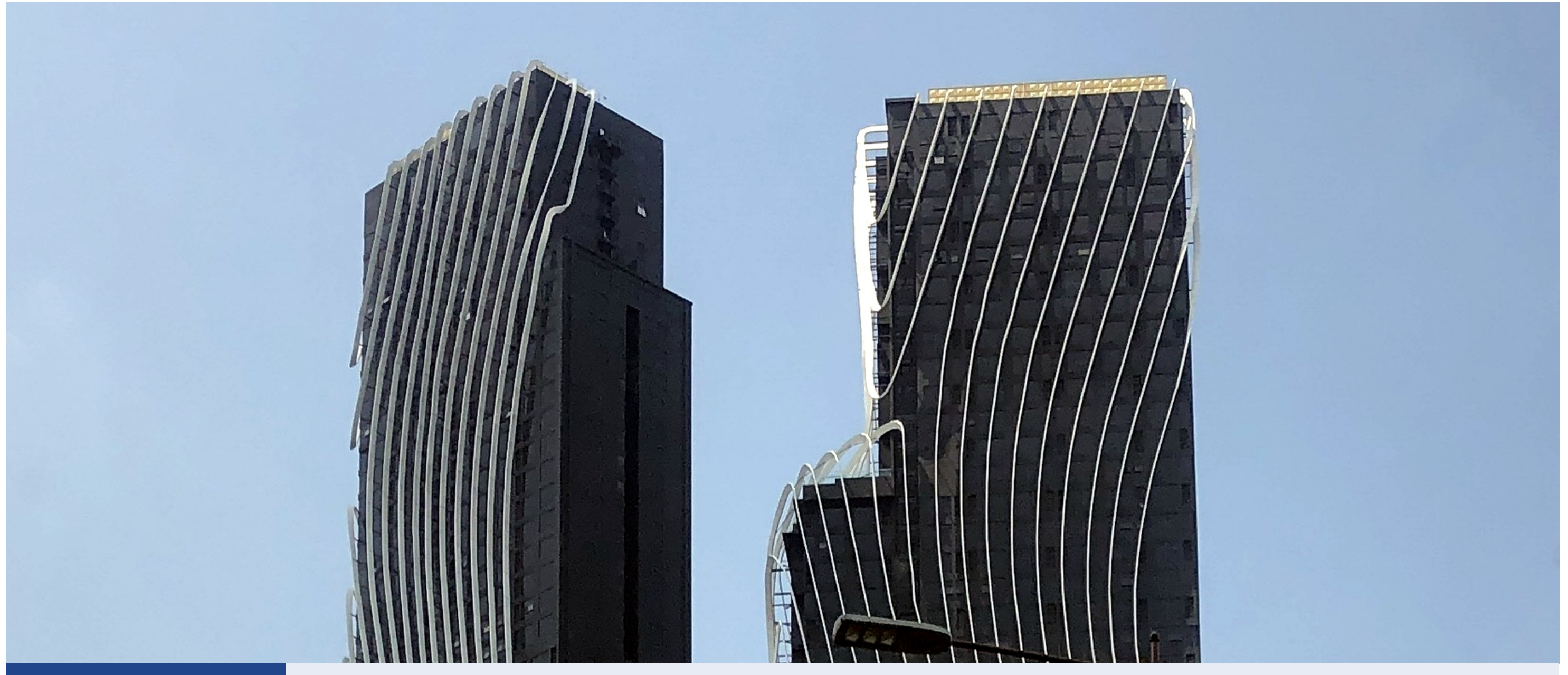
PROFESSIONAL ALUMINUM SHEET, METAL CEILING SYSTEM SUPPLIER

### ■ 系统说明 / System Note

磐筑可按此类项目要求提供外墙铝幕墙板、铝蜂窝板、冲孔/异形铝板及室内金属天花系统。

PUNCHUK supplies aluminum curtain wall panels, honeycomb panels, perforated or shaped aluminum panels, and interior metal ceiling systems for projects of this type.

铝制鳞片式表皮适合高端商业体外墙、雨屏系统和异形板深化。



海外应用参考 / OVERSEAS APPLICATION REFERENCE

## 吉隆坡 Art é Mont Kiara Arté Mont Kiara

项目位置 / Location

马来西亚吉隆坡 · KL Metropolis / Mont Kiara  
Kuala Lumpur, Malaysia · KL Metropolis / Mont Kiara

专业铝单板、金属天花系统供应商  
PROFESSIONAL ALUMINUM SHEET, METAL CEILING SYSTEM SUPPLIER

### ■ 系统说明 / System Note

磐筑可按此类项目要求提供外墙铝幕墙板、铝蜂窝板、冲孔/异形铝板及室内金属天花系统。

PUNCHUK supplies aluminum curtain wall panels, honeycomb panels, perforated or shaped aluminum panels, and interior metal ceiling systems for projects of this type.

塔楼外立面以连续铝肋形成大面积金属表皮，适合作为高层住宅与酒店项目的铝单板幕墙参考。



海外应用参考 / OVERSEAS APPLICATION REFERENCE

## 首尔东大门设计广场 DDP Dongdaemun Design Plaza

项目位置 / Location

韩国首尔 · 东大门核心区

Seoul, South Korea · Dongdaemun district

专业铝单板、金属天花系统供应商

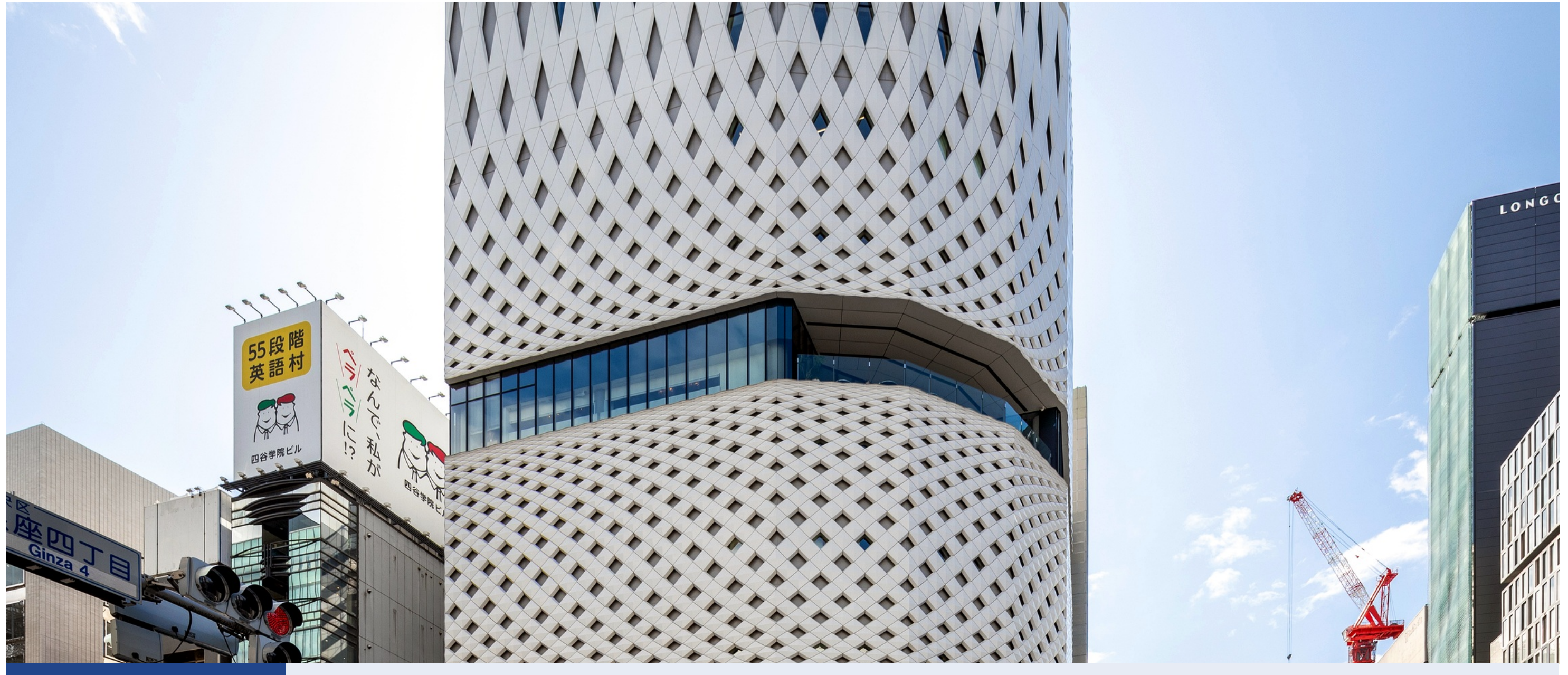
PROFESSIONAL ALUMINUM SHEET, METAL CEILING SYSTEM SUPPLIER

### ■ 系统说明 / System Note

磐筑可按此类项目要求提供外墙铝幕墙板、铝蜂窝板、冲孔/异形铝板及室内金属天花系统。

PUNCHUK supplies aluminum curtain wall panels, honeycomb panels, perforated or shaped aluminum panels, and interior metal ceiling systems for projects of this type.

大量曲面铝板和穿孔图案，是异形铝幕墙板加工与编号安装的典型参考。



海外应用参考 / OVERSEAS APPLICATION REFERENCE

## 东京 Ginza Place Ginza Place

项目位置 / Location

日本东京 · 银座四丁目交叉口

Tokyo, Japan · Ginza 4-chome crossing

专业铝单板、金属天花系统供应商

PROFESSIONAL ALUMINUM SHEET, METAL CEILING SYSTEM SUPPLIER

### ■ 系统说明 / System Note

磐筑可按此类项目要求提供外墙铝幕墙板、铝蜂窝板、冲孔/异形铝板及室内金属天花系统。

PUNCHUK supplies aluminum curtain wall panels, honeycomb panels, perforated or shaped aluminum panels, and interior metal ceiling systems for projects of this type.

精密铝板模块体现高密度商业街区对细节、平整度和夜景效果的要求。



海外应用参考 / OVERSEAS APPLICATION REFERENCE

## 东京墨田北斋美术馆 Sumida Hokusai Museum

项目位置 / Location

日本东京 · 墨田区

Tokyo, Japan · Sumida Ward

专业铝单板、金属天花系统供应商

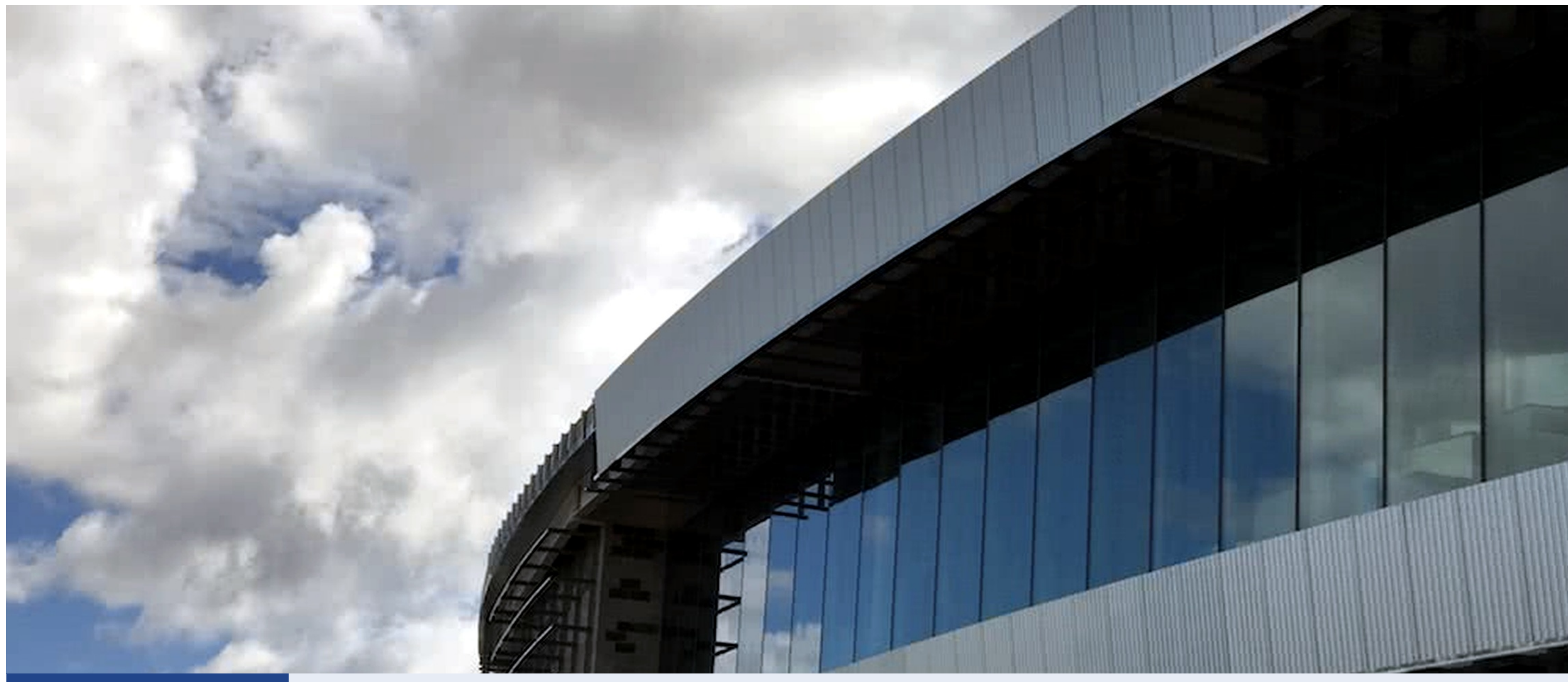
PROFESSIONAL ALUMINUM SHEET, METAL CEILING SYSTEM SUPPLIER

### ■ 系统说明 / System Note

磐筑可按此类项目要求提供外墙铝幕墙板、铝蜂窝板、冲孔/异形铝板及室内金属天花系统。

PUNCHUK supplies aluminum curtain wall panels, honeycomb panels, perforated or shaped aluminum panels, and interior metal ceiling systems for projects of this type.

反射铝板外立面适用于文化建筑的轻量化围护、折面造型和耐候饰面。



海外应用参考 / OVERSEAS APPLICATION REFERENCE

## 珀斯 Optus Stadium Optus Stadium

项目位置 / Location

澳大利亚珀斯 · Burswood 半岛

Perth, Australia · Burswood Peninsula

专业铝单板、金属天花系统供应商

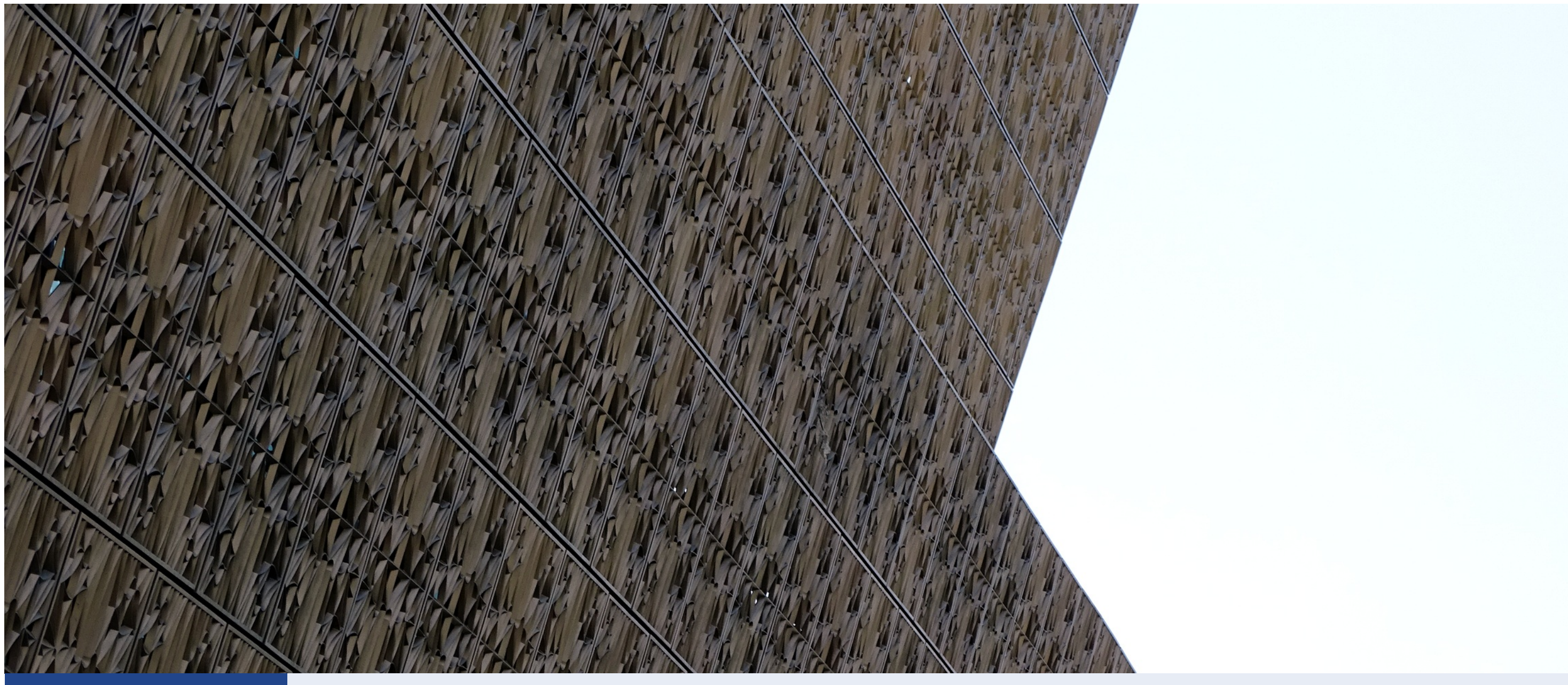
PROFESSIONAL ALUMINUM SHEET, METAL CEILING SYSTEM SUPPLIER

### ■ 系统说明 / System Note

磐筑可按此类项目要求提供外墙铝幕墙板、铝蜂窝板、冲孔/异形铝板及室内金属天花系统。

PUNCHUK supplies aluminum curtain wall panels, honeycomb panels, perforated or shaped aluminum panels, and interior metal ceiling systems for projects of this type.

阳极氧化铝外立面适合大型场馆的耐候、抗腐蚀和夜景灯光系统。



海外应用参考 / OVERSEAS APPLICATION REFERENCE

## 美国国家非裔历史文化博物馆

### National Museum of African American History and Culture

项目位置 / Location

美国华盛顿特区 · 国家广场

Washington, D.C., USA · National Mall

专业铝单板、金属天花系统供应商

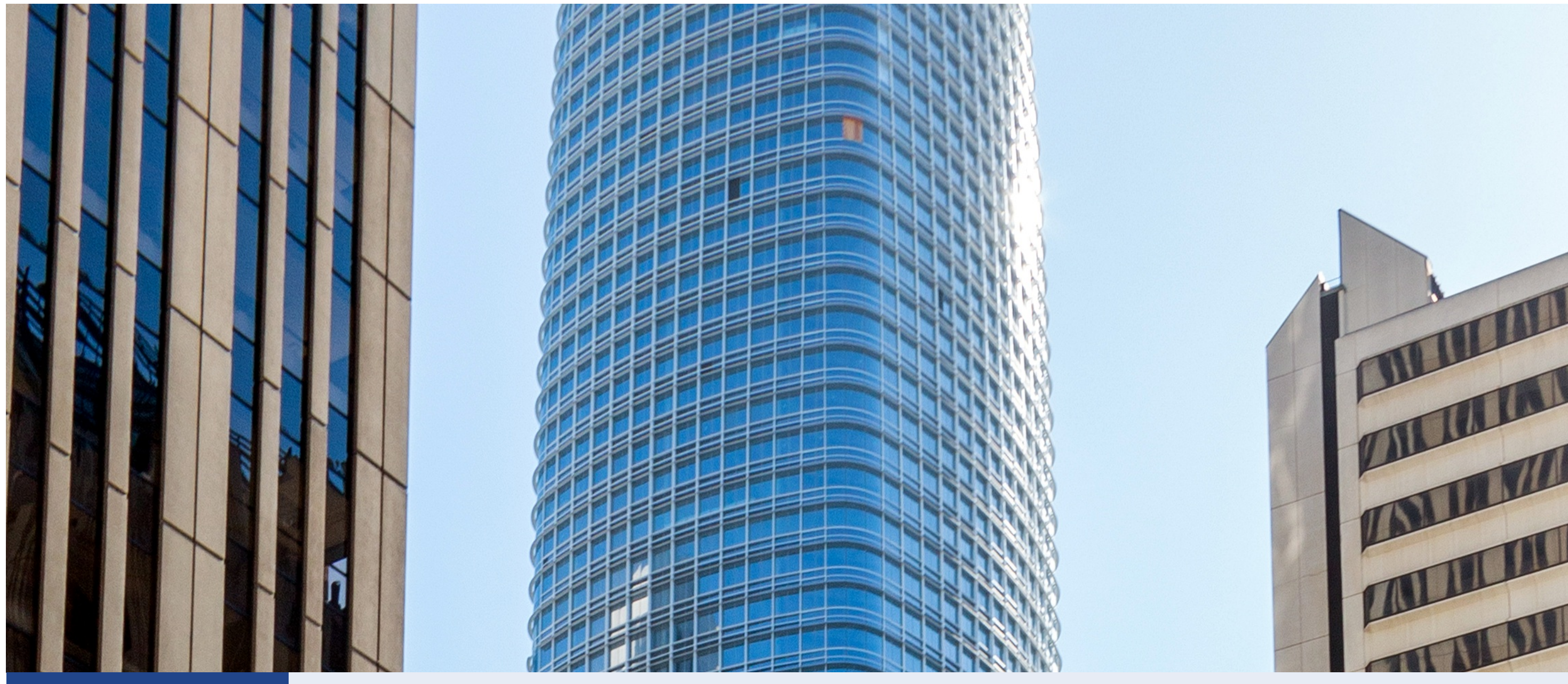
PROFESSIONAL ALUMINUM SHEET, METAL CEILING SYSTEM SUPPLIER

#### ■ 系统说明 / System Note

磐筑可按此类项目要求提供外墙铝幕墙板、铝蜂窝板、冲孔/异形铝板及室内金属天花系统。

PUNCHUK supplies aluminum curtain wall panels, honeycomb panels, perforated or shaped aluminum panels, and interior metal ceiling systems for projects of this type.

青铜色铸铝镂空面板形成大面积遮阳外壳，适合作为文化建筑铝单板、冲孔板和装饰幕墙参考。



海外应用参考 / OVERSEAS APPLICATION REFERENCE

## 旧金山 Salesforce Tower Salesforce Tower

项目位置 / Location

美国旧金山 · Transbay 区

San Francisco, USA · Transbay district

专业铝单板、金属天花系统供应商

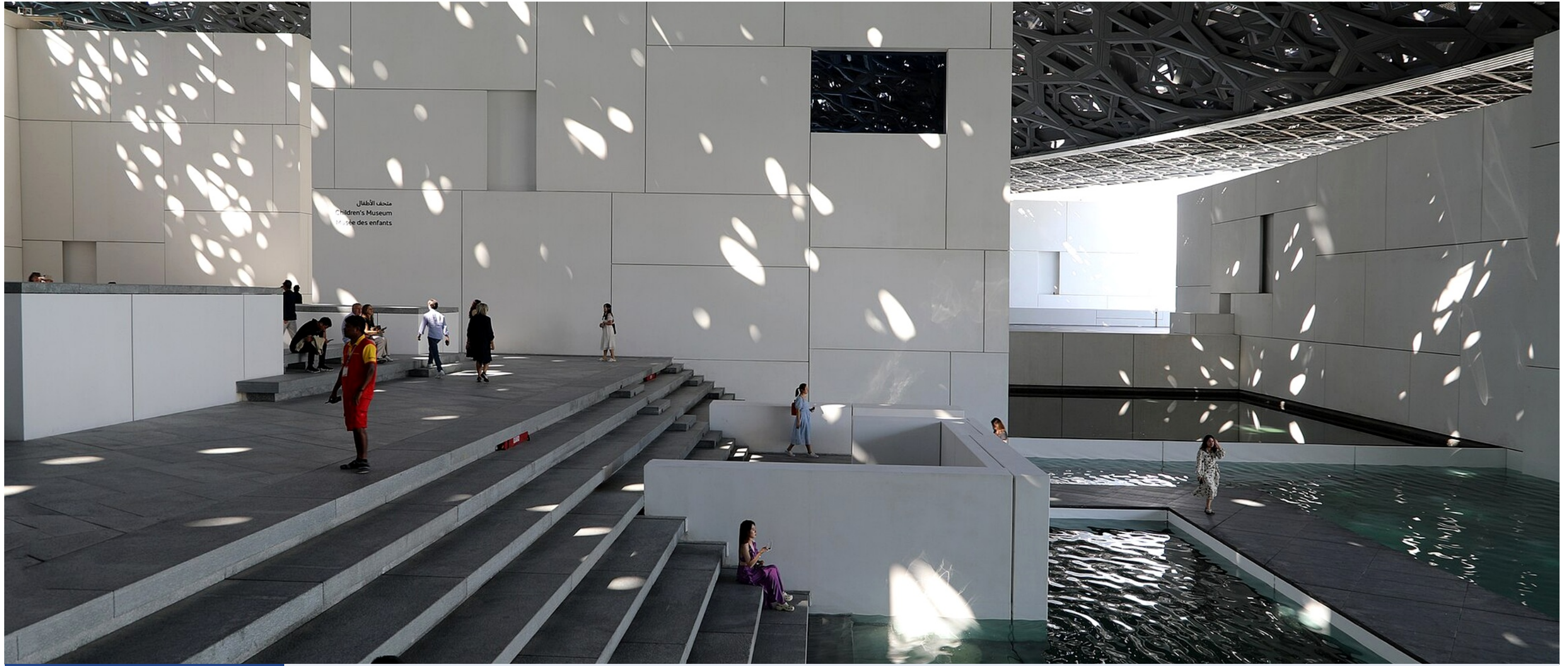
PROFESSIONAL ALUMINUM SHEET, METAL CEILING SYSTEM SUPPLIER

### ■ 系统说明 / System Note

磐筑可按此类项目要求提供外墙铝幕墙板、铝蜂窝板、冲孔/异形铝板及室内金属天花系统。

PUNCHUK supplies aluminum curtain wall panels, honeycomb panels, perforated or shaped aluminum panels, and interior metal ceiling systems for projects of this type.

铝制遮阳网格体现高层幕墙对节能、立面层次和精密安装的要求。



海外应用参考 / OVERSEAS APPLICATION REFERENCE

## 阿布扎比卢浮宫

Louvre Abu Dhabi

项目位置 / Location

阿联酋阿布扎比 · Saadiyat Island

Abu Dhabi, UAE · Saadiyat Island

专业铝单板、金属天花系统供应商

PROFESSIONAL ALUMINUM SHEET, METAL CEILING SYSTEM SUPPLIER

### ■ 系统说明 / System Note

磐筑可按此类项目要求提供外墙铝幕墙板、铝蜂窝板、冲孔/异形铝板及室内金属天花系统。

PUNCHUK supplies aluminum curtain wall panels, honeycomb panels, perforated or shaped aluminum panels, and interior metal ceiling systems for projects of this type.

多层金属星形格构可作为中东地区遮阳、金属天花和异形铝构件参考。



中东应用参考 / MIDDLE EAST APPLICATION REFERENCE

## 迪拜购物中心 Fashion Avenue Dubai Mall Fashion Avenue

项目位置 / Location

阿联酋迪拜 · Downtown Dubai

Dubai, UAE · Downtown Dubai

专业铝单板、金属天花系统供应商

PROFESSIONAL ALUMINUM SHEET, METAL CEILING SYSTEM SUPPLIER

### ■ 系统说明 / System Note

磐筑可按此类项目要求提供外墙铝幕墙板、铝蜂窝板、冲孔/异形铝板及室内金属天花系统。

PUNCHUK supplies aluminum curtain wall panels, honeycomb panels, perforated or shaped aluminum panels, and interior metal ceiling systems for projects of this type.

项目资料包含铝铝板、铝制格栅、百叶和玻璃铝幕墙系统，适合作为高端商业综合体铝幕墙与室内金属装饰参考。



中东应用参考 / MIDDLE EAST APPLICATION REFERENCE

## 多哈 Eye of Doha

### Eye of Doha

项目位置 / Location

卡塔尔多哈 · 商业区

Doha, Qatar · commercial district

专业铝单板、金属天花系统供应商

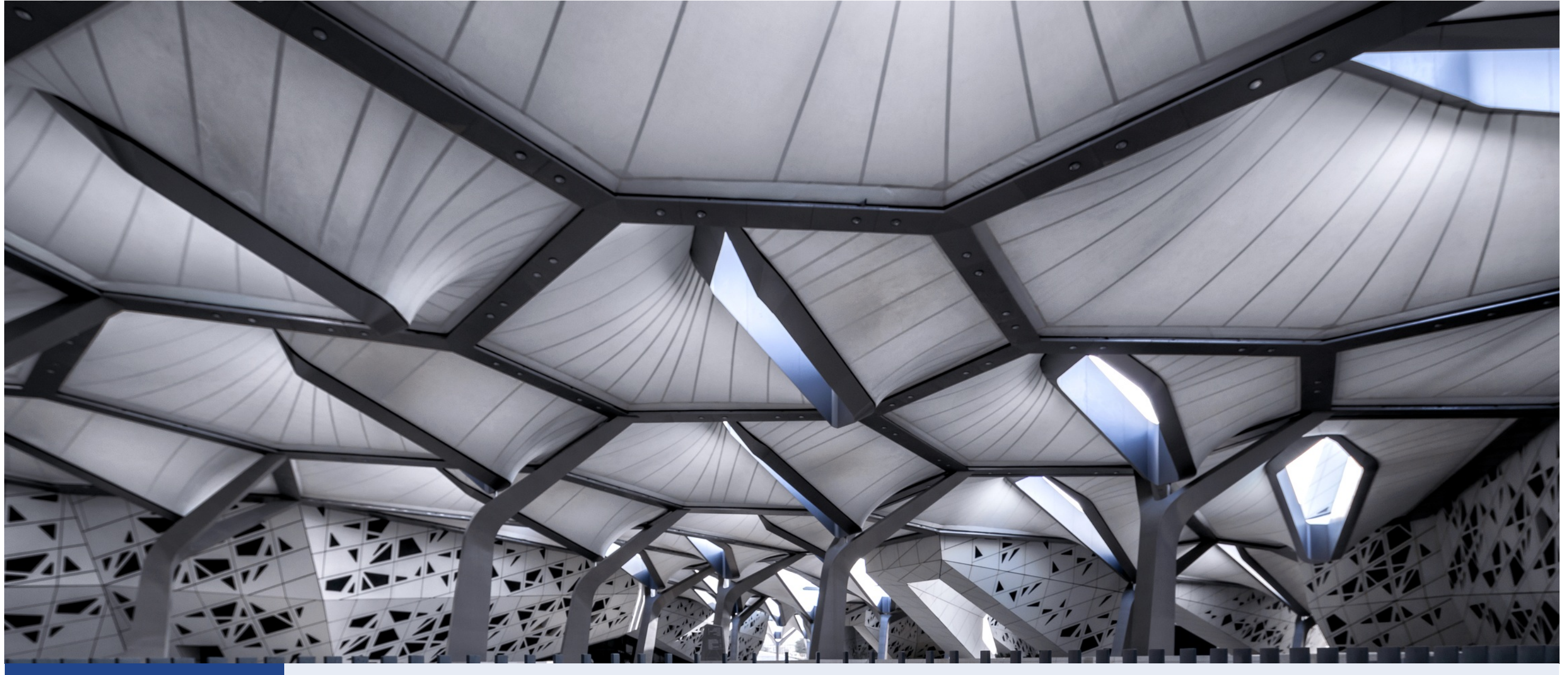
PROFESSIONAL ALUMINUM SHEET, METAL CEILING SYSTEM SUPPLIER

#### ■ 系统说明 / System Note

磐筑可按此类项目要求提供外墙铝幕墙板、铝蜂窝板、冲孔/异形铝板及室内金属天花系统。

PUNCHUK supplies aluminum curtain wall panels, honeycomb panels, perforated or shaped aluminum panels, and interior metal ceiling systems for projects of this type.

外立面采用彩色穿孔铝蜂窝板，适合作为商业建筑、娱乐综合体和城市地标的轻量化铝板幕墙参考。



中东应用参考 / MIDDLE EAST APPLICATION REFERENCE

## 利雅得 KAPSARC 研究中心 KAPSARC Research Center

项目位置 / Location

沙特阿拉伯利雅得  
Riyadh, Saudi Arabia

专业铝单板、金属天花系统供应商

PROFESSIONAL ALUMINUM SHEET, METAL CEILING SYSTEM SUPPLIER

### ■ 系统说明 / System Note

磐筑可按此类项目要求提供外墙铝幕墙板、铝蜂窝板、冲孔/异形铝板及室内金属天花系统。

PUNCHUK supplies aluminum curtain wall panels, honeycomb panels, perforated or shaped aluminum panels, and interior metal ceiling systems for projects of this type.

蜂巢式建筑体量结合铝制遮阳百叶、幕墙与金属表皮，可作为沙漠气候下铝制外立面系统参考。

# INTEGRITY SERVICE

## 磐筑建材 · 诚信为您服务

Professional aluminum facade and metal ceiling solutions

### 产品咨询

#### PRODUCT CONSULTING

根据工程图纸、效果图或材料清单，提供铝幕墙板、铝蜂窝板、冲孔板、异形板及金属天花的选型建议。

We review drawings, renderings or BOQs and recommend suitable aluminum curtain wall panels, honeycomb panels, perforated panels, shaped panels and metal ceiling systems.

### 样品服务

#### SAMPLE SERVICE

可按项目颜色、纹理、涂层体系快速调色制样，支持氟碳喷涂、粉末喷涂、木纹、石纹等表面效果。

Samples can be prepared to match project colors, textures and coating systems, including PVDF, powder coating, wood grain and stone-look finishes.

### 图纸深化

#### SHOP DRAWING DEVELOPMENT

提供板块分格、节点优化、展开图、加工图及安装配合建议，帮助项目从设计意向落到可生产、可安装。

We support panel layout, detail optimization, flat patterns, fabrication drawings and installation coordination so design intent can be manufactured and installed.

### 定制生产

#### CUSTOM FABRICATION

工厂按确认图纸进行开料、折弯、焊接、打磨、加强筋、角码及表面处理，满足室内外铝制品定制需求。

Panels are cut, folded, welded, polished, reinforced, bracketed and finished according to approved drawings for both interior and exterior aluminum applications.

### 包装与交付

#### PACKING & DELIVERY

按出口项目需求进行保护膜、纸箱、木箱或托盘包装，并配合装柜、发运及到场清点，降低运输损耗。

Export packing can include protective film, cartons, crates or pallets, with loading, dispatch and site-count support to reduce transport damage.

### 安装指导

#### INSTALLATION GUIDANCE

可为幕墙公司、承包商及安装团队提供板块编号、安装顺序、节点说明和现场问题沟通支持。

We provide panel numbering, installation sequencing, detail explanations and site coordination support for facade contractors and installation teams.

## 专业铝单板、金属天花系统供应商

PROFESSIONAL ALUMINUM SHEET, METAL CEILING SYSTEM SUPPLIER

[www.punchuk.com](http://www.punchuk.com)